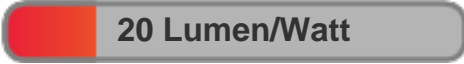


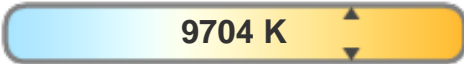
Light efficiency:



Light quality:



Color temperature:



Output: 355 lm
Peak: 1804 cd
Power: 17.7 W
PF: 0.64

4 PLANES



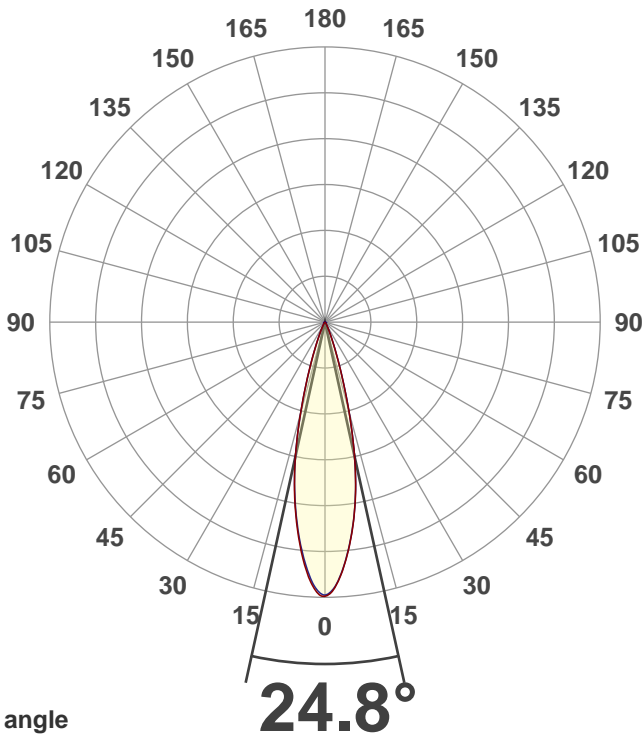
Product name:
MEDI-O RGBA 10000K Medium

Date and time:
5/12/2021 2:02:27 PM

Item number:
NA

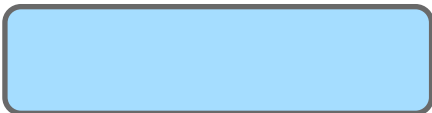
Minimum order quantity:
NA

Additional information:
**Ludicrous Mode 10000K
Medium (DMX255CCT)**

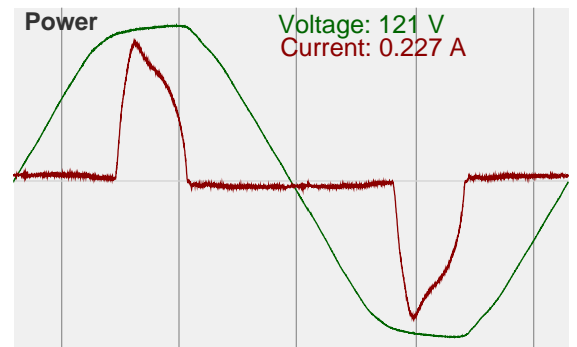
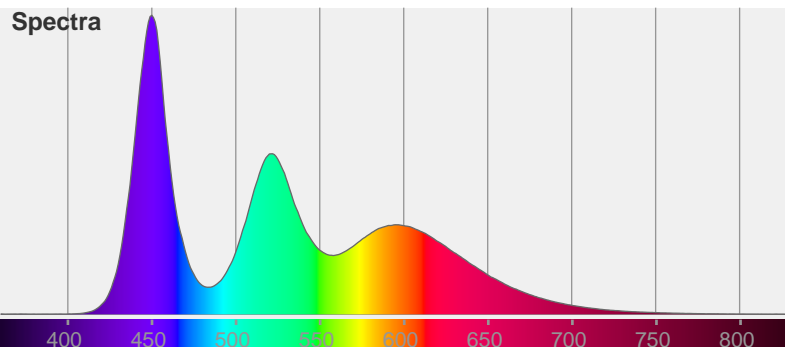


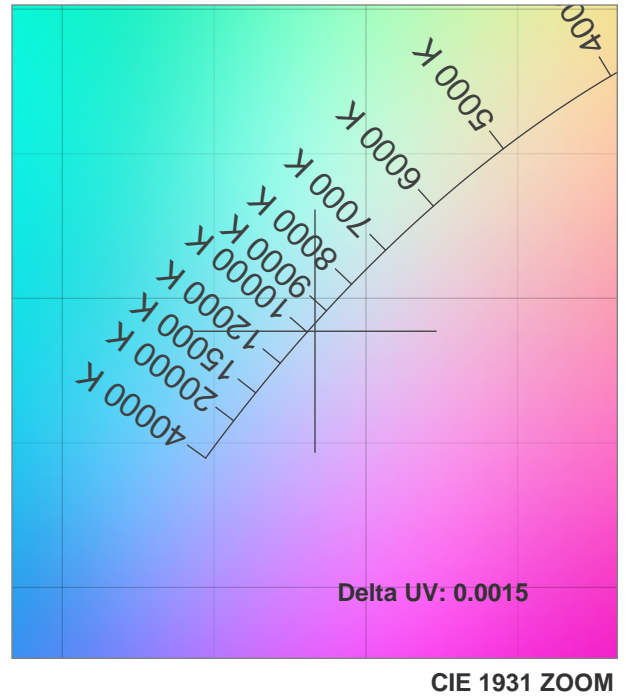
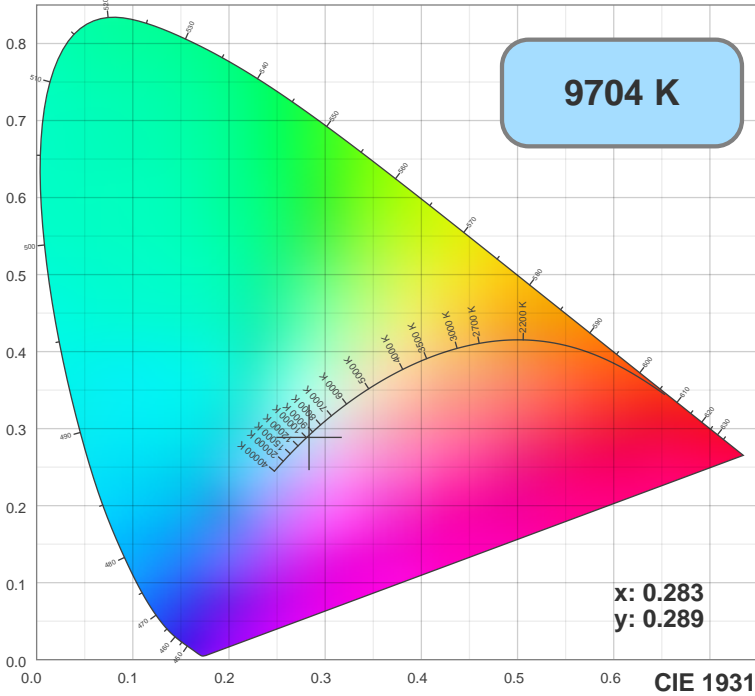
Beam angle

Color

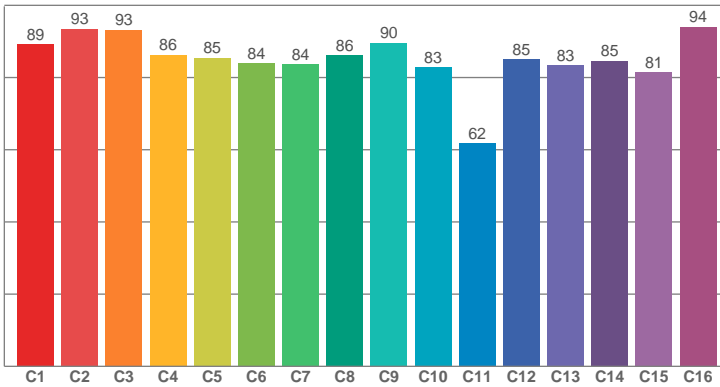


CIE1931
x: 0.283
y: 0.289

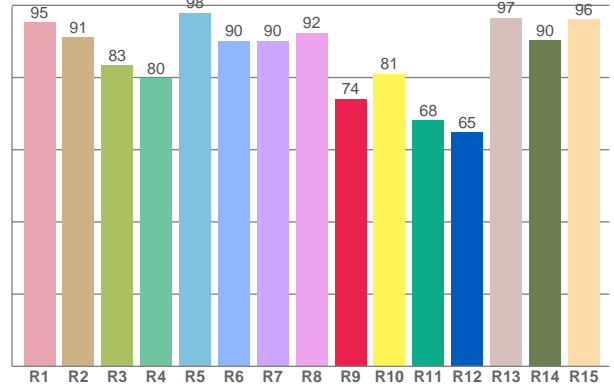




TM30: 85.6



CRI: 90.0 (R1-R8)



CRI R values, only R1-R8 are used to calculate final CRI value

R1	R2	R3	R4	R5	R6	R7	R8	R9	R10	R11	R12	R13	R14	R15
95.33	91.08	83.35	79.80	97.92	90.16	90.18	92.38	74.05	81.06	68.08	64.86	96.53	90.32	96.19

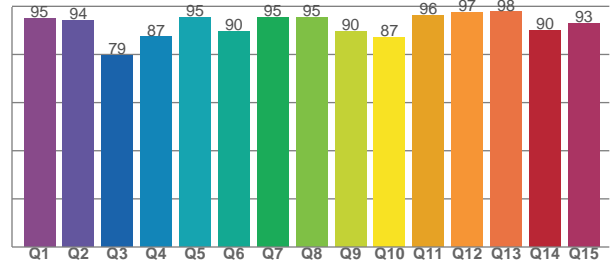
TM30 C values, 16 binned values out of total of 99 C values

C1	C2	C3	C4	C5	C6	C7	C8	C9	C10	C11	C12	C13	C14	C15	C16
89.19	93.50	93.19	86.29	85.40	83.87	83.61	86.09	89.57	82.90	61.78	85.08	83.40	84.60	81.38	94.03

CQS Q values

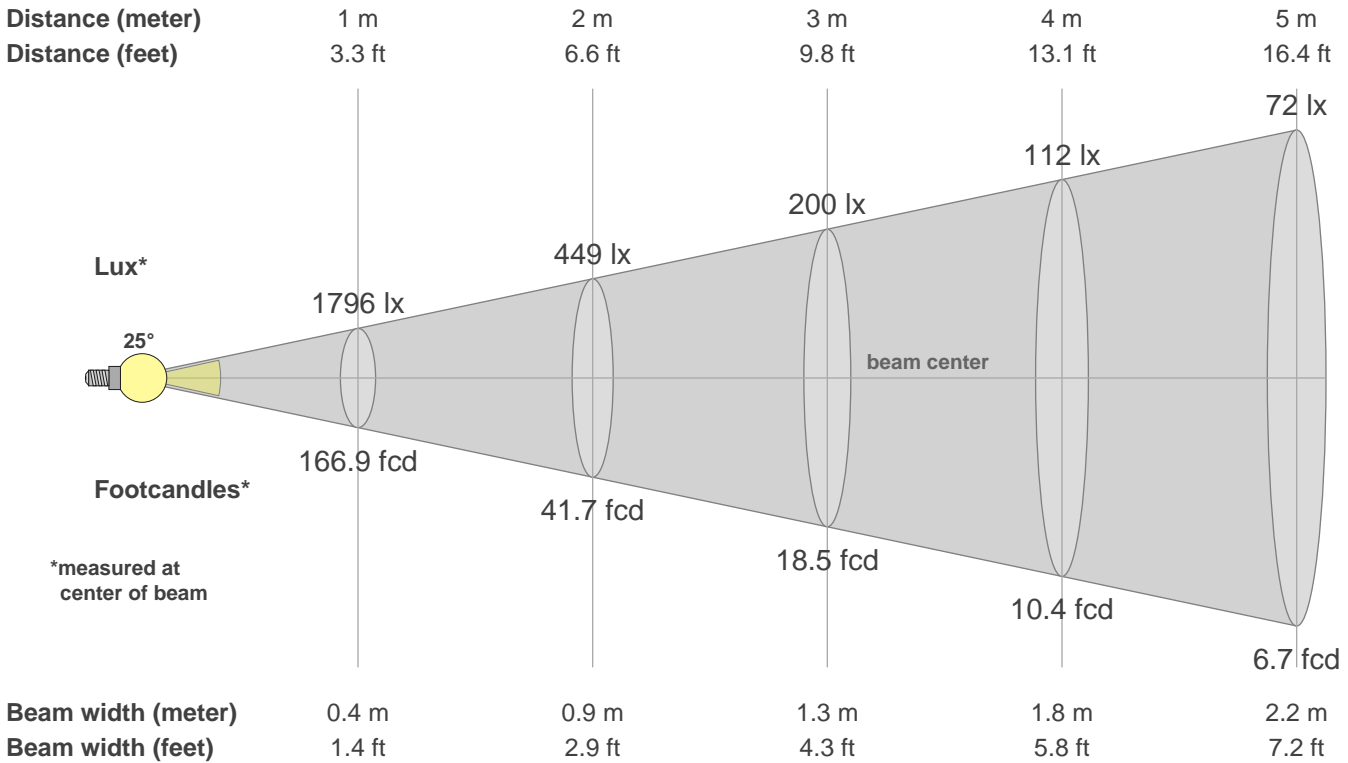
Q1	Q2	Q3	Q4	Q5	Q6	Q7	Q8	Q9	Q10	Q11	Q12	Q13	Q14	Q15
95.01	94.03	79.49	87.27	95.33	89.62	95.45	95.43	89.61	86.96	96.18	97.36	97.74	89.93	93.00

CQS: 90.8



Color parameters

CCT	CRI	CRI R9	TM30 Rf	TM30 Rg	CQS	x	y	u	v	Duv
9704 K	90.0	74.1	85.6	105.5	90.8	0.3	0.3	0.2	0.3	-0.0045



Intensities in 0° c-plane

0°	2°	4°	6°	8°	10°	12°	14°	16°	18°	20°	22°	24°	26°	28°	30°	32°	34°	36°	38°
1796	1750	1642	1500	1339	1157	951	726	510	333	208	127	78	50	33	23	17	13	11	9
100%	97%	91%	84%	75%	64%	53%	40%	28%	19%	12%	7%	4%	3%	2%	1%	1%	1%	1%	0%

Intensities in 90° c-plane

0°	2°	4°	6°	8°	10°	12°	14°	16°	18°	20°	22°	24°	26°	28°	30°	32°	34°	36°	38°
1796	1751	1638	1495	1334	1153	948	726	512	333	205	123	77	50	34	24	17	13	11	9
100%	98%	91%	83%	74%	64%	53%	40%	28%	19%	11%	7%	4%	3%	2%	1%	1%	1%	1%	0%

Intensities in 180° c-plane

0°	2°	4°	6°	8°	10°	12°	14°	16°	18°	20°	22°	24°	26°	28°	30°	32°	34°	36°	38°
1796	1762	1658	1511	1340	1155	952	732	523	351	225	140	88	56	38	27	20	15	12	10
100%	98%	92%	84%	75%	64%	53%	41%	29%	20%	13%	8%	5%	3%	2%	2%	1%	1%	1%	1%

Intensities in 270° c-plane

0°	2°	4°	6°	8°	10°	12°	14°	16°	18°	20°	22°	24°	26°	28°	30°	32°	34°	36°	38°
1796	1749	1638	1494	1327	1145	947	732	519	341	214	134	84	55	37	26	19	14	11	9
100%	97%	91%	83%	74%	64%	53%	41%	29%	19%	12%	7%	5%	3%	2%	1%	1%	1%	1%	0%

Beam angle 50%	Field angle 10%	Cutoff angle 2.5%	Intensity ratio in 120° cone	Intensity ratio in 90° cone
24.8°	41.4°	53.3°	99.4%	98.2%