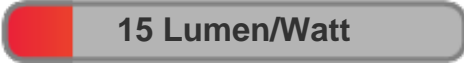




Light efficiency:



Light quality:



Color temperature:



Output: 265 lm

Peak: 699 cd

Power: 17.7 W

PF: 0.63

4 PLANES



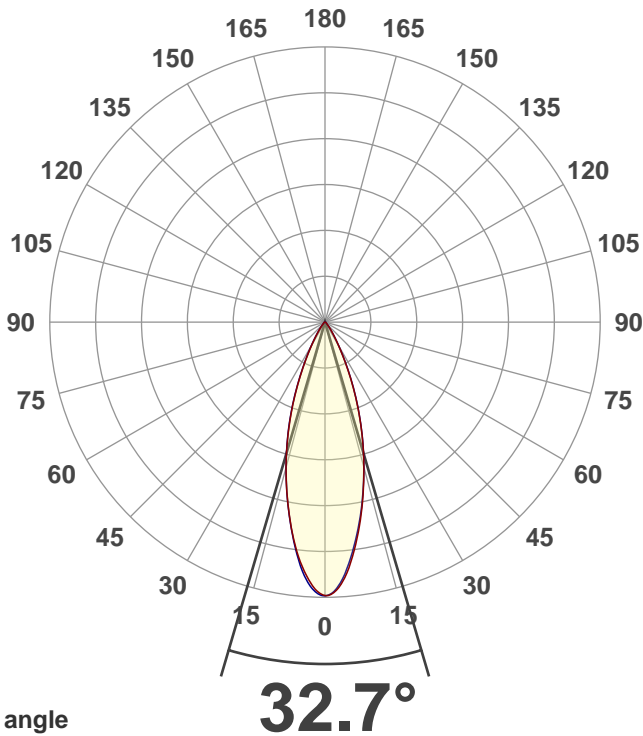
Product name:
MEDI-O RGBA 2000K Wide

Date and time:
5/12/2021 2:28:31 PM

Item number:
NA

Minimum order quantity:
NA

Additional information:
**Ludicrous Mode 2000K Wide
(DMX000CCT)**



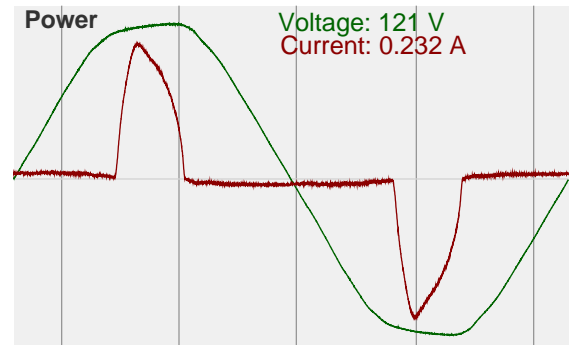
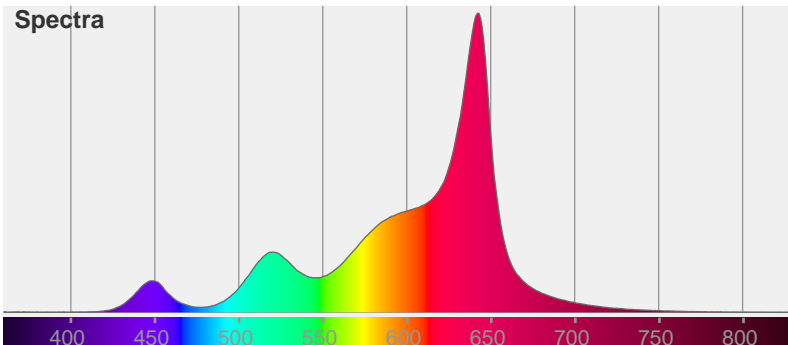
Beam angle

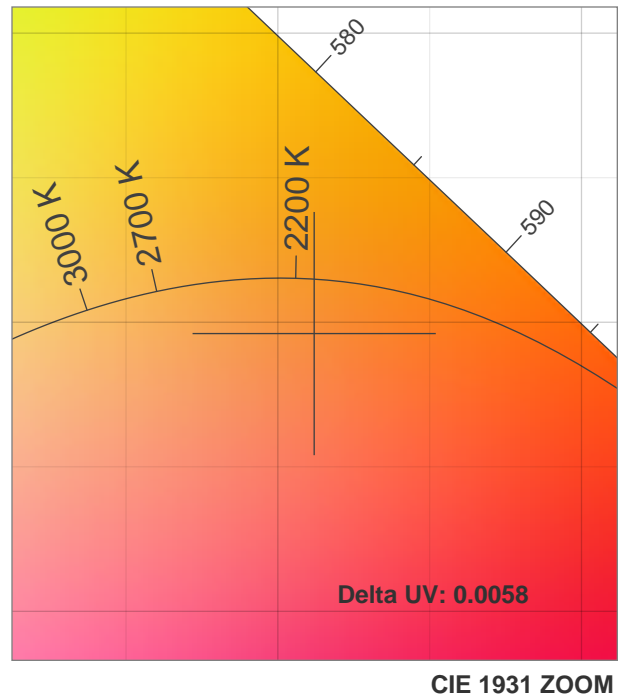
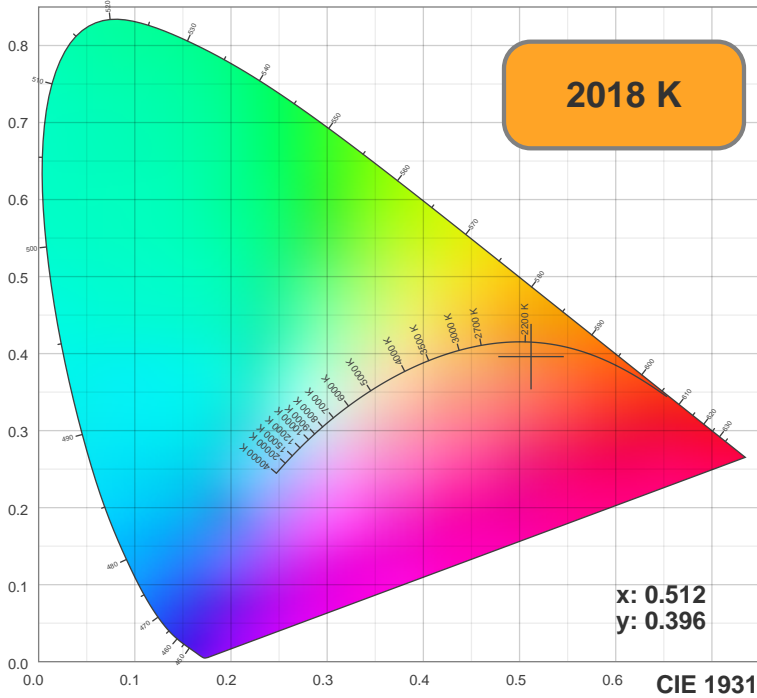
Color



CIE1931
x: 0.512
y: 0.396

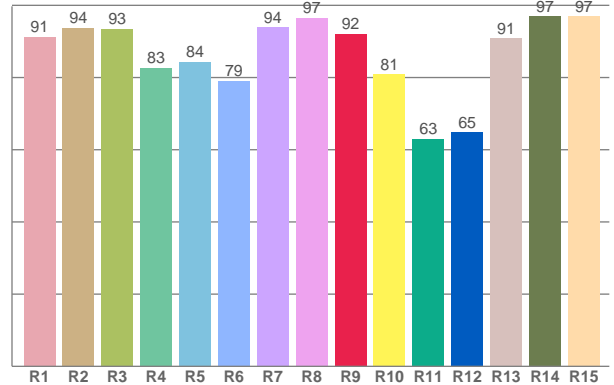
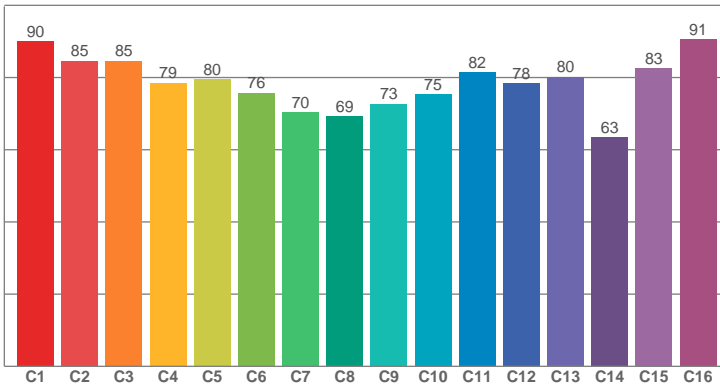
Spectra





TM30: 80.5

CRI: 89.4 (R1-R8)



CRI R values, only R1-R8 are used to calculate final CRI value

R1	R2	R3	R4	R5	R6	R7	R8	R9	R10	R11	R12	R13	R14	R15
91.22	93.70	93.43	82.63	84.37	79.05	93.95	96.57	92.10	80.88	62.99	64.80	90.80	96.95	96.93

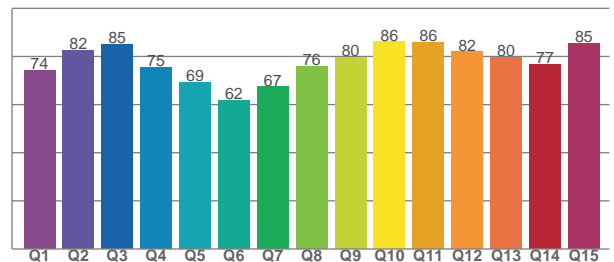
TM30 C values, 16 binned values out of total of 99 C values

C1	C2	C3	C4	C5	C6	C7	C8	C9	C10	C11	C12	C13	C14	C15	C16
90.09	84.58	84.64	78.57	79.52	75.76	70.38	69.28	72.67	75.26	81.51	78.42	80.15	63.44	82.58	90.63

CQS Q values

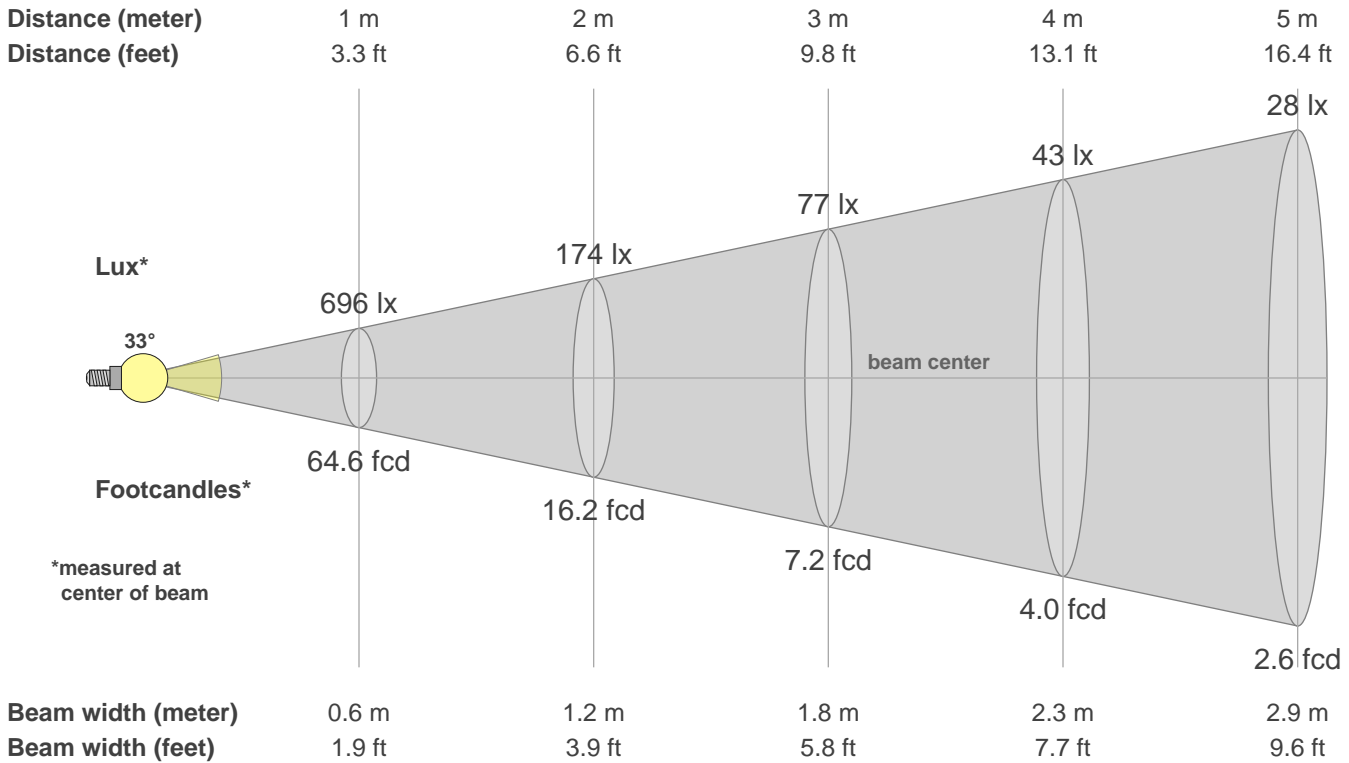
Q1	Q2	Q3	Q4	Q5	Q6	Q7	Q8	Q9	Q10	Q11	Q12	Q13	Q14	Q15
74.26	82.48	85.00	75.40	69.18	61.66	67.35	75.92	79.63	86.07	85.94	81.89	79.51	76.83	85.37

CQS: 75.5



Color parameters

CCT	CRI	CRI R9	TM30 Rf	TM30 Rg	CQS	x	y	u	v	Duv
2018 K	89.4	92.1	80.5	113.6	75.5	0.5	0.4	0.3	0.4	-0.0058



Intensities in 0° c-plane

0°	2°	4°	6°	8°	10°	12°	14°	16°	18°	20°	22°	24°	26°	28°	30°	32°	34°	36°	38°
696	687	660	618	569	516	463	409	358	308	259	212	168	129	96	70	52	38	28	21
100%	99%	95%	89%	82%	74%	67%	59%	51%	44%	37%	31%	24%	19%	14%	10%	7%	5%	4%	3%

Intensities in 90° c-plane

0°	2°	4°	6°	8°	10°	12°	14°	16°	18°	20°	22°	24°	26°	28°	30°	32°	34°	36°	38°
696	685	655	610	561	511	460	408	358	309	259	213	170	131	97	71	51	37	26	19
100%	98%	94%	88%	81%	73%	66%	59%	51%	44%	37%	31%	24%	19%	14%	10%	7%	5%	4%	3%

Intensities in 180° c-plane

0°	2°	4°	6°	8°	10°	12°	14°	16°	18°	20°	22°	24°	26°	28°	30°	32°	34°	36°	38°
696	683	651	611	564	513	461	410	358	307	257	210	165	126	95	69	50	36	26	19
100%	98%	94%	88%	81%	74%	66%	59%	52%	44%	37%	30%	24%	18%	14%	10%	7%	5%	4%	3%

Intensities in 270° c-plane

0°	2°	4°	6°	8°	10°	12°	14°	16°	18°	20°	22°	24°	26°	28°	30°	32°	34°	36°	38°
696	686	659	618	568	514	462	409	358	309	260	212	167	128	95	71	52	38	28	20
100%	99%	95%	89%	82%	74%	66%	59%	51%	44%	37%	30%	24%	18%	14%	10%	7%	5%	4%	3%

Beam angle 50%	Field angle 10%	Cutoff angle 2.5%	Intensity ratio in 120° cone	Intensity ratio in 90° cone
32.7°	60.1°	77.7°	98.5%	96.2%