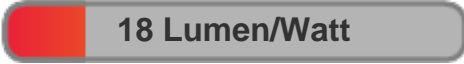




Light efficiency:



Light quality:



Color temperature:



Output: 314 lm
Peak: 1595 cd
Power: 17.6 W
PF: 0.63

4 PLANES



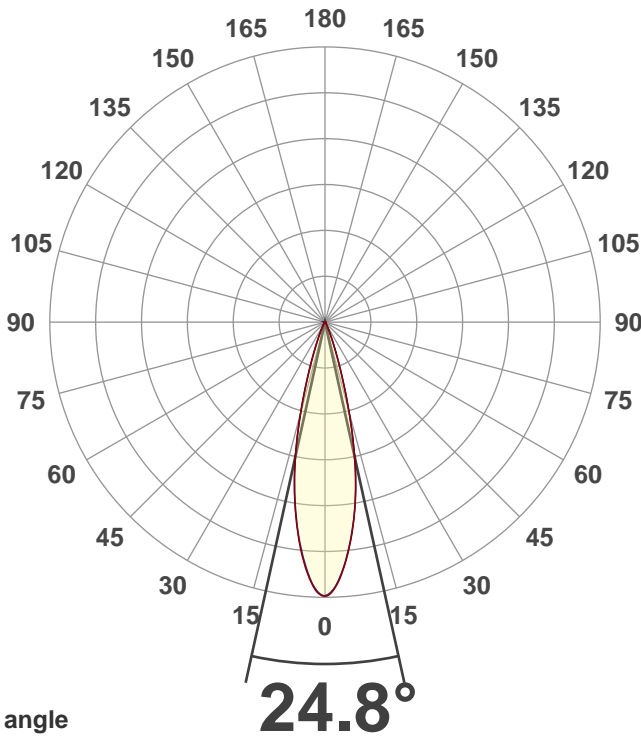
Product name:
MEDI-O RGBA 4000K Medium

Date and time:
5/12/2021 2:00:01 PM

Item number:
NA

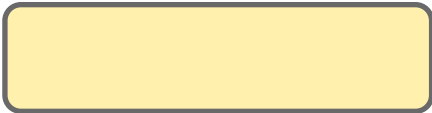
Minimum order quantity:
NA

Additional information:
**Ludicrous Mode 4000K Medium
(DMX070CCT)**



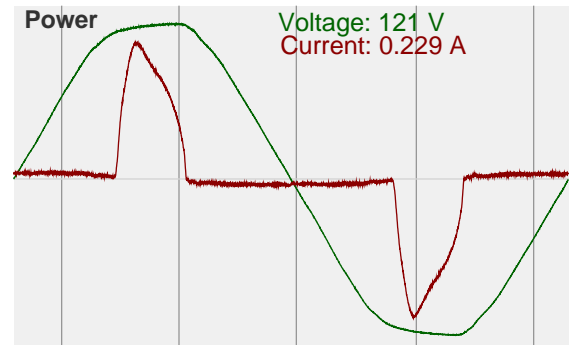
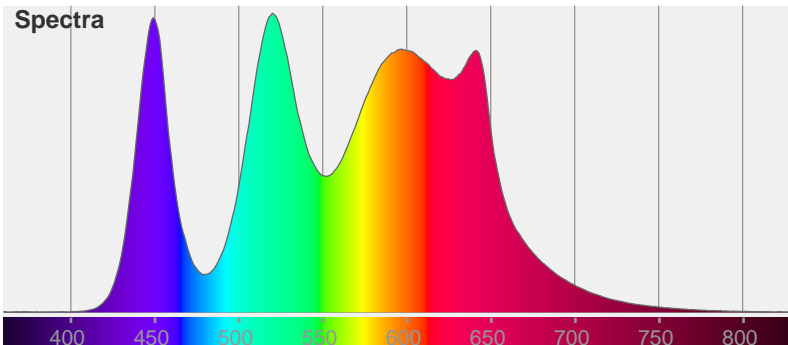
Beam angle

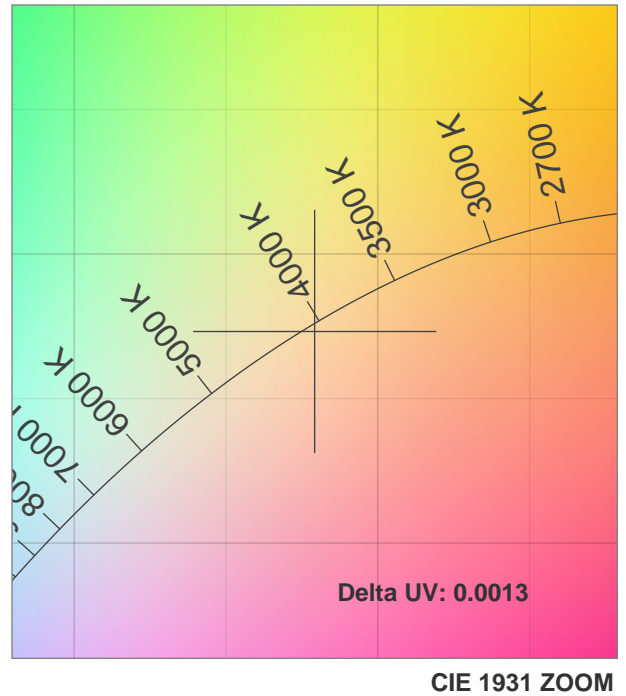
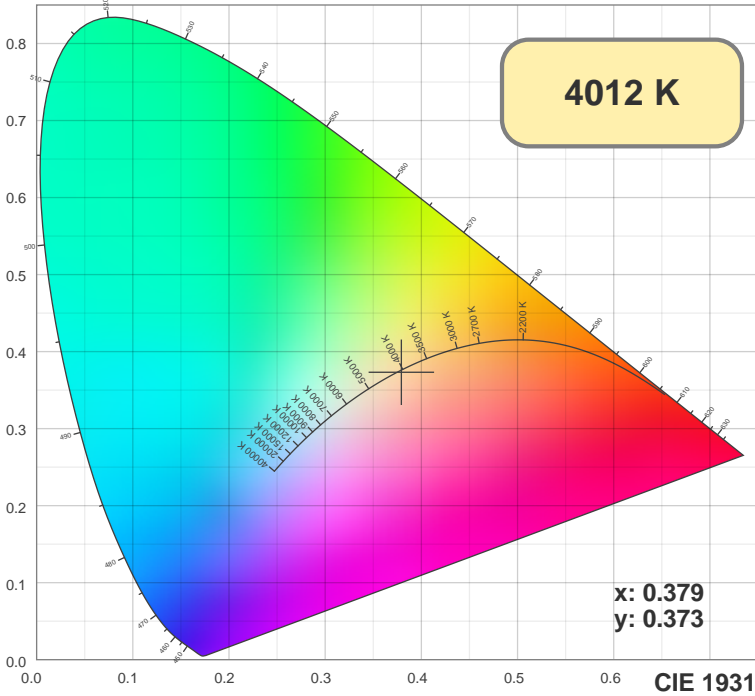
Color



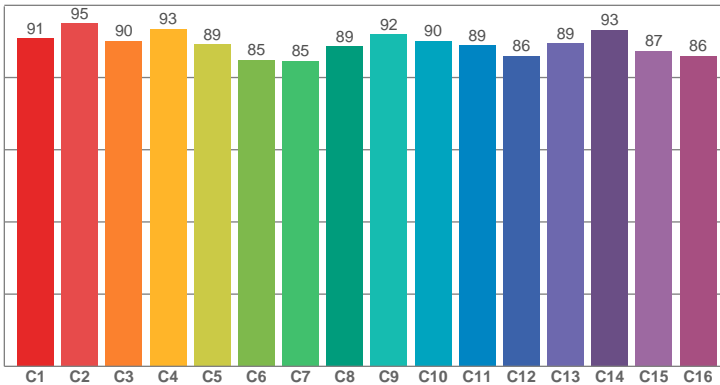
CIE1931
x: 0.379
y: 0.373

Spectra

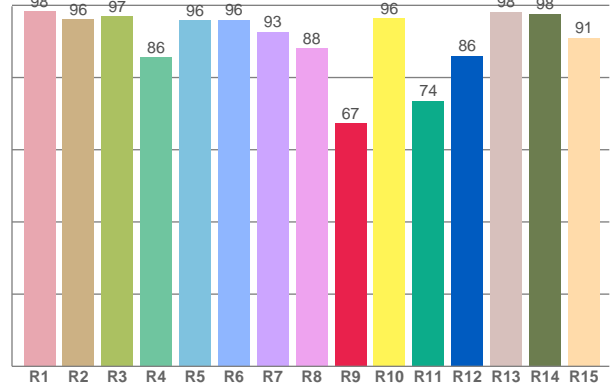




TM30: 89.6



CRI: 93.7 (R1-R8)



CRI R values, only R1-R8 are used to calculate final CRI value

R1	R2	R3	R4	R5	R6	R7	R8	R9	R10	R11	R12	R13	R14	R15
98.28	96.20	96.87	85.62	95.82	96.01	92.70	88.13	67.37	96.47	73.56	86.04	98.19	97.59	90.99

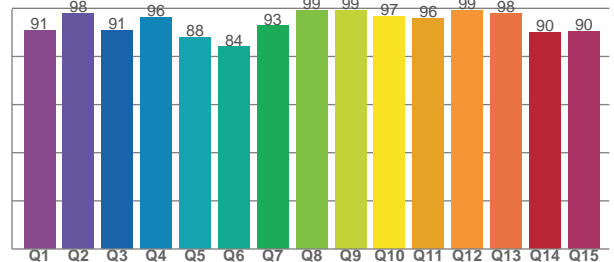
TM30 C values, 16 binned values out of total of 99 C values

C1	C2	C3	C4	C5	C6	C7	C8	C9	C10	C11	C12	C13	C14	C15	C16
90.91	94.98	90.11	93.49	89.11	84.89	84.58	88.56	91.92	90.16	88.96	86.03	89.38	93.18	87.34	86.04

CQS Q values

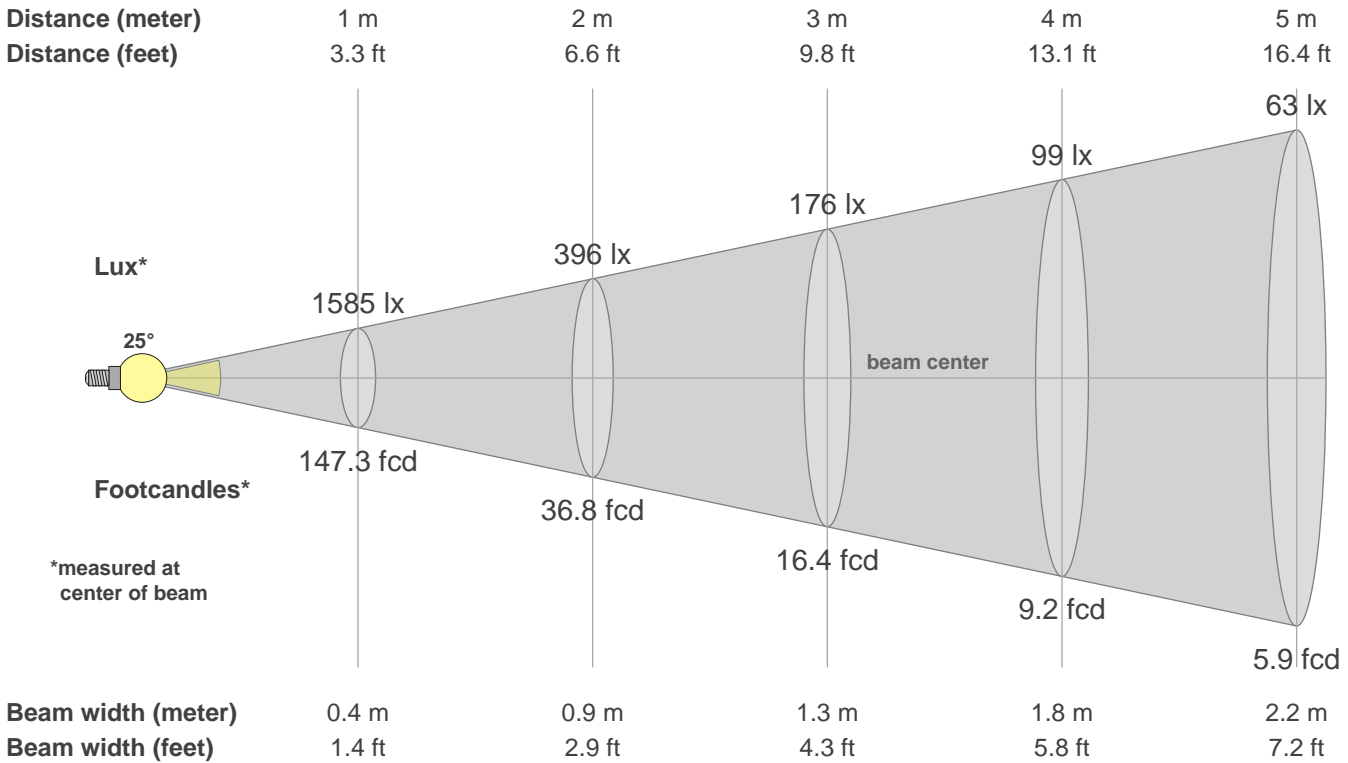
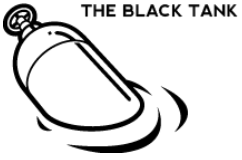
Q1	Q2	Q3	Q4	Q5	Q6	Q7	Q8	Q9	Q10	Q11	Q12	Q13	Q14	Q15
90.89	97.97	90.85	96.38	88.05	84.00	92.69	99.23	99.09	96.53	95.92	99.20	97.84	89.87	90.43

CQS: 92.4



Color parameters

CCT	CRI	CRI R9	TM30 Rf	TM30 Rg	CQS	x	y	u	v	Duv
4012 K	93.7	67.4	89.6	105.4	92.4	0.4	0.4	0.2	0.3	-0.0013



Intensities in 0° c-plane

0°	2°	4°	6°	8°	10°	12°	14°	16°	18°	20°	22°	24°	26°	28°	30°	32°	34°	36°	38°
1585	1544	1451	1325	1182	1021	841	640	447	292	183	113	69	44	29	21	16	12	10	8
100%	97%	91%	84%	75%	64%	53%	40%	28%	18%	12%	7%	4%	3%	2%	1%	1%	1%	1%	0%

Intensities in 90° c-plane

0°	2°	4°	6°	8°	10°	12°	14°	16°	18°	20°	22°	24°	26°	28°	30°	32°	34°	36°	38°
1585	1547	1446	1320	1177	1017	837	642	450	290	180	112	70	45	30	21	15	12	10	8
100%	98%	91%	83%	74%	64%	53%	40%	28%	18%	11%	7%	4%	3%	2%	1%	1%	1%	1%	0%

Intensities in 180° c-plane

0°	2°	4°	6°	8°	10°	12°	14°	16°	18°	20°	22°	24°	26°	28°	30°	32°	34°	36°	38°
1585	1556	1464	1334	1183	1018	838	647	462	304	191	120	76	50	34	24	18	14	11	9
100%	98%	92%	84%	75%	64%	53%	41%	29%	19%	12%	8%	5%	3%	2%	2%	1%	1%	1%	1%

Intensities in 270° c-plane

0°	2°	4°	6°	8°	10°	12°	14°	16°	18°	20°	22°	24°	26°	28°	30°	32°	34°	36°	38°
1585	1546	1450	1323	1175	1012	836	645	459	307	196	122	76	48	32	23	17	13	10	8
100%	98%	91%	83%	74%	64%	53%	41%	29%	19%	12%	8%	5%	3%	2%	1%	1%	1%	1%	1%

Beam angle 50%	Field angle 10%	Cutoff angle 2.5%	Intensity ratio in 120° cone	Intensity ratio in 90° cone
24.8°	41.3°	53.5°	99.3%	98.0%