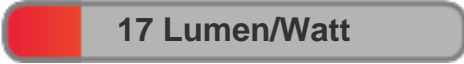




Light efficiency:



Light quality:



Color temperature:



Output: 306 lm
Peak: 7754 cd
Power: 18.2 W
PF: 0.63

4 PLANES



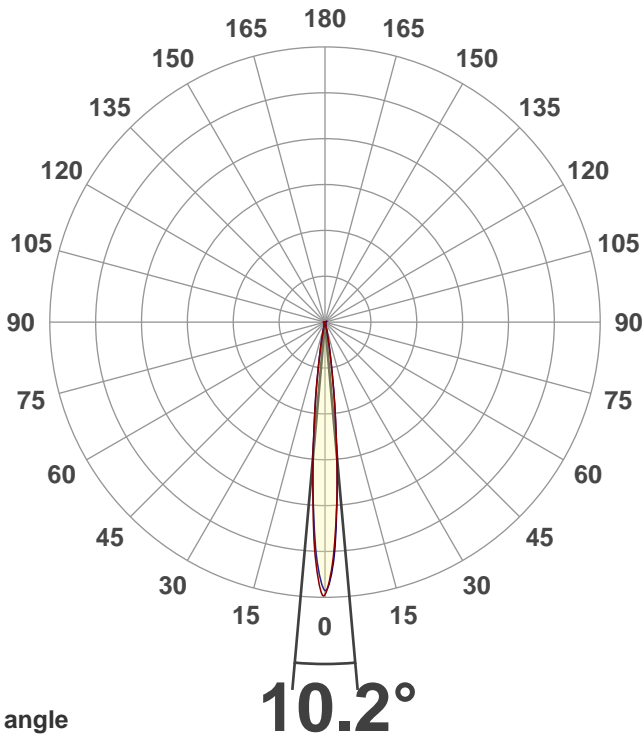
Product name:
MEDI-O RGBA Zoom 10 degrees 3400K

Date and time:
5/13/2021 12:28:32 PM

Item number:
NA

Minimum order quantity:
NA

Additional information:
Ludicrous Mode with zoom 10 degrees (DMX000), 3400K (DMX070CCT)



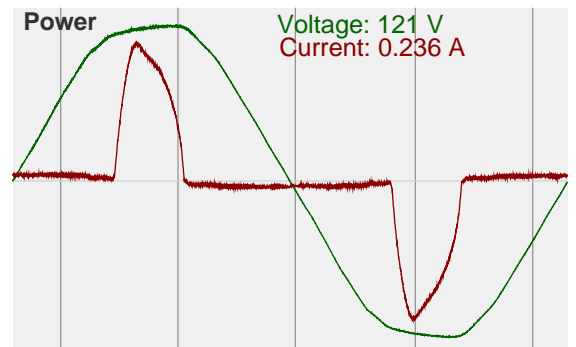
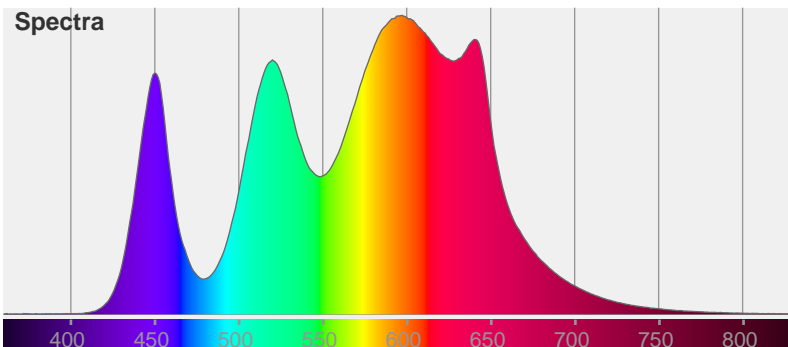
Beam angle

Color

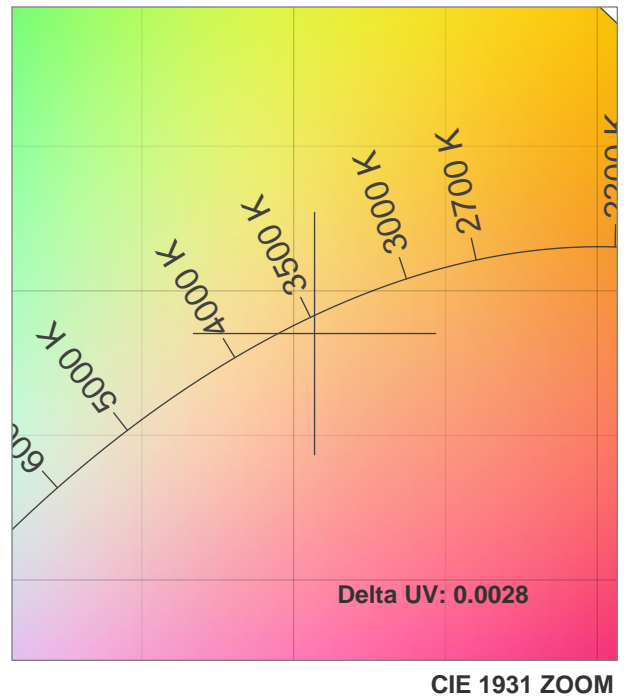
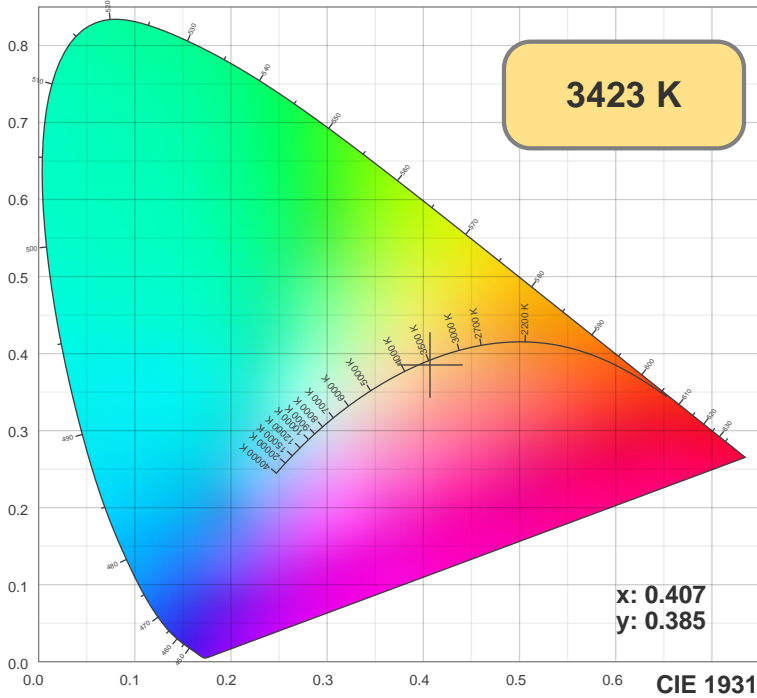


CIE1931
x: 0.407
y: 0.385

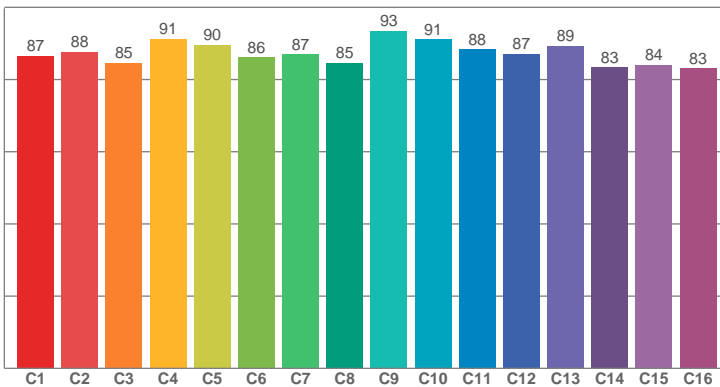
Spectra



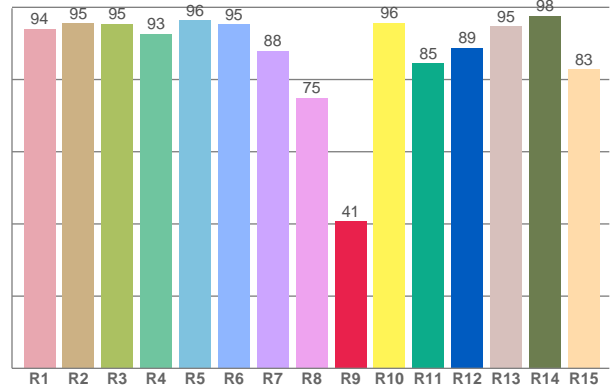
Voltage: 121 V
Current: 0.236 A



TM30: 87.8



CRI: 91.5 (R1-R8)



CRI R values, only R1-R8 are used to calculate final CRI value

R1	R2	R3	R4	R5	R6	R7	R8	R9	R10	R11	R12	R13	R14	R15
94.02	95.49	95.41	92.68	96.42	95.36	87.91	74.91	40.67	95.66	84.51	88.72	94.74	97.59	82.90

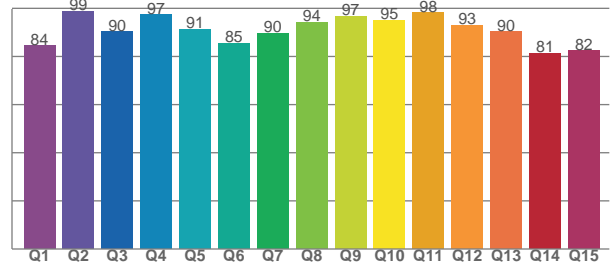
TM30 C values, 16 binned values out of total of 99 C values

C1	C2	C3	C4	C5	C6	C7	C8	C9	C10	C11	C12	C13	C14	C15	C16
86.53	87.68	84.59	91.24	89.64	86.08	86.98	84.67	93.48	91.17	88.36	87.06	89.34	83.40	84.07	83.08

CQS Q values

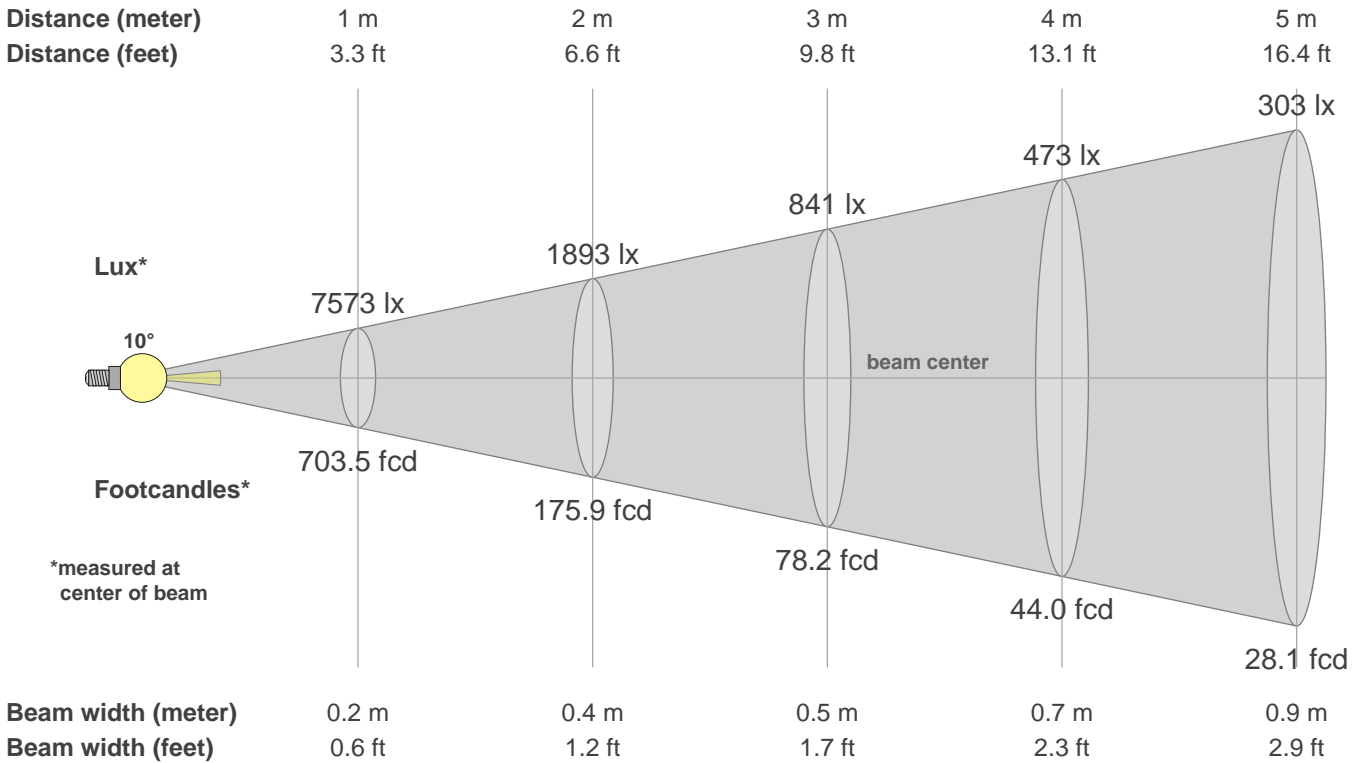
Q1	Q2	Q3	Q4	Q5	Q6	Q7	Q8	Q9	Q10	Q11	Q12	Q13	Q14	Q15
84.38	87.67	90.20	97.30	91.39	85.32	89.55	94.02	96.53	95.12	98.14	92.87	90.27	81.29	82.32

CQS: 89.5



Color parameters

CCT	CRI	CRI R9	TM30 Rf	TM30 Rg	CQS	x	y	u	v	Duv
3423 K	91.5	40.7	87.8	103.3	89.5	0.4	0.4	0.2	0.3	-0.0028



Intensities in 0° c-plane

0°	1°	2°	3°	4°	5°	6°	7°	8°	9°	10°	11°	12°	13°	14°	15°	16°	17°	18°	19°
7573	7165	6646	5762	4875	3913	2950	2212	1522	1041	690	423	277	153	112	71	58	45	37	31
100%	95%	88%	76%	64%	52%	39%	29%	20%	14%	9%	6%	4%	2%	1%	1%	1%	1%	0%	0%

Intensities in 90° c-plane

0°	1°	2°	3°	4°	5°	6°	7°	8°	9°	10°	11°	12°	13°	14°	15°	16°	17°	18°	19°
7573	7195	6734	5898	4902	3935	3000	2163	1566	993	696	399	269	162	108	80	60	49	39	33
100%	95%	89%	78%	65%	52%	40%	29%	21%	13%	9%	5%	4%	2%	1%	1%	1%	1%	1%	0%

Intensities in 180° c-plane

0°	1°	2°	3°	4°	5°	6°	7°	8°	9°	10°	11°	12°	13°	14°	15°	16°	17°	18°	19°
7573	7417	6807	6037	4959	3909	3045	2180	1607	1055	705	432	257	175	111	87	64	52	41	34
100%	98%	90%	80%	65%	52%	40%	29%	21%	14%	9%	6%	3%	2%	1%	1%	1%	1%	1%	0%

Intensities in 270° c-plane

0°	1°	2°	3°	4°	5°	6°	7°	8°	9°	10°	11°	12°	13°	14°	15°	16°	17°	18°	19°
7573	7121	6670	5791	4856	3933	3015	2230	1597	1042	713	394	279	165	119	86	66	52	42	35
100%	94%	88%	76%	64%	52%	40%	29%	21%	14%	9%	5%	4%	2%	2%	1%	1%	1%	1%	0%

Beam angle 50%	Field angle 10%	Cutoff angle 2.5%	Intensity ratio in 120° cone	Intensity ratio in 90° cone
10.2°	19.5°	25.4°	99.9%	99.5%