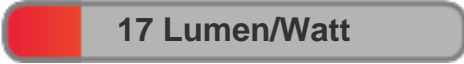




Light efficiency:



Light quality:



Color temperature:



Output: 308 lm
Peak: 1214 cd
Power: 18.2 W
PF: 0.63

4 PLANES



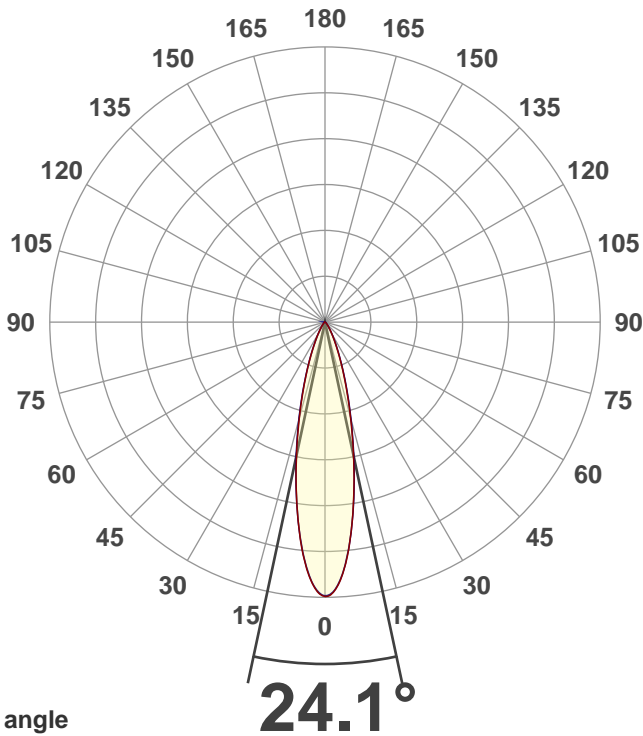
Product name:
**MEDI-O RGBA Zoom 24 degrees
3400K**

Date and time:
5/13/2021 12:59:33 PM

Item number:
NA

Minimum order quantity:
NA

Additional information:
**Ludicrous Mode with zoom 24
degrees (DMX128), 3400K
(DMX070CCT)**



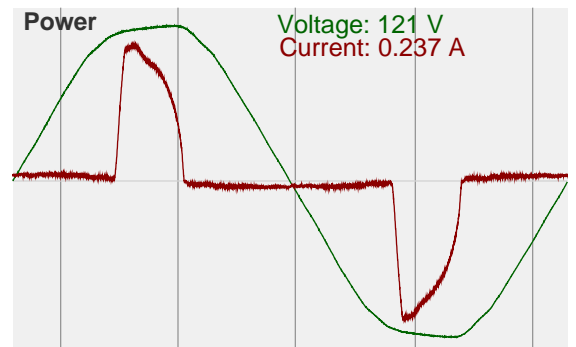
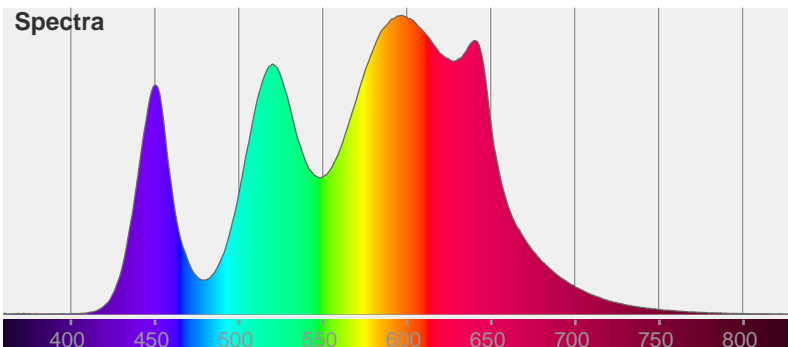
Beam angle

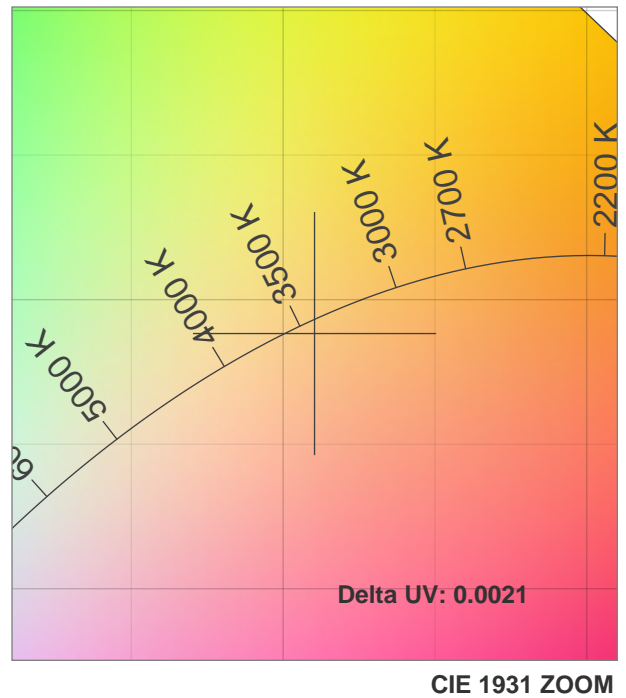
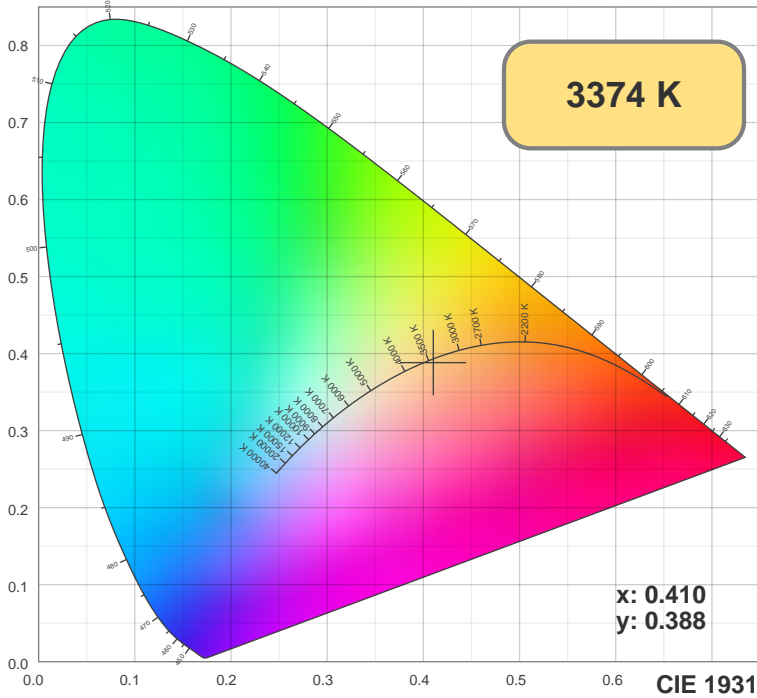
Color



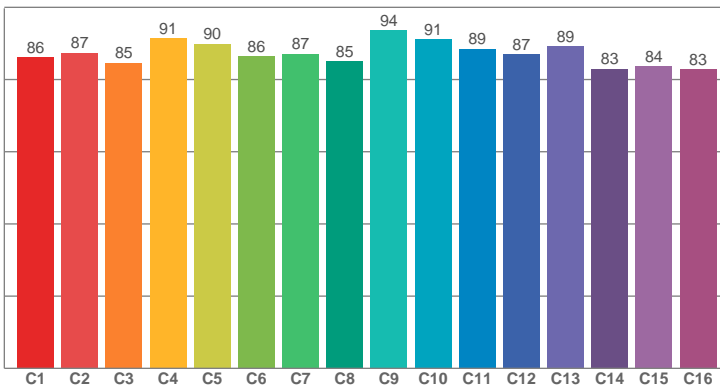
CIE1931
x: 0.410
y: 0.388

Spectra

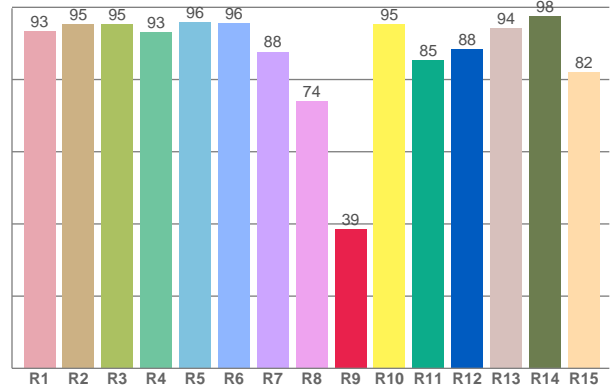




TM30: 87.8



CRI: 91.3 (R1-R8)



CRI R values, only R1-R8 are used to calculate final CRI value

R1	R2	R3	R4	R5	R6	R7	R8	R9	R10	R11	R12	R13	R14	R15
93.42	95.27	95.32	93.03	95.91	95.62	87.70	73.95	38.52	95.21	85.31	88.39	94.24	97.52	82.03

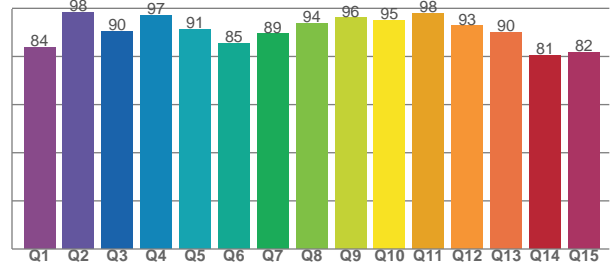
TM30 C values, 16 binned values out of total of 99 C values

C1	C2	C3	C4	C5	C6	C7	C8	C9	C10	C11	C12	C13	C14	C15	C16
86.13	87.44	84.61	91.45	89.84	86.49	87.12	85.04	93.55	91.13	88.52	86.99	89.14	82.98	83.62	82.80

CQS Q values

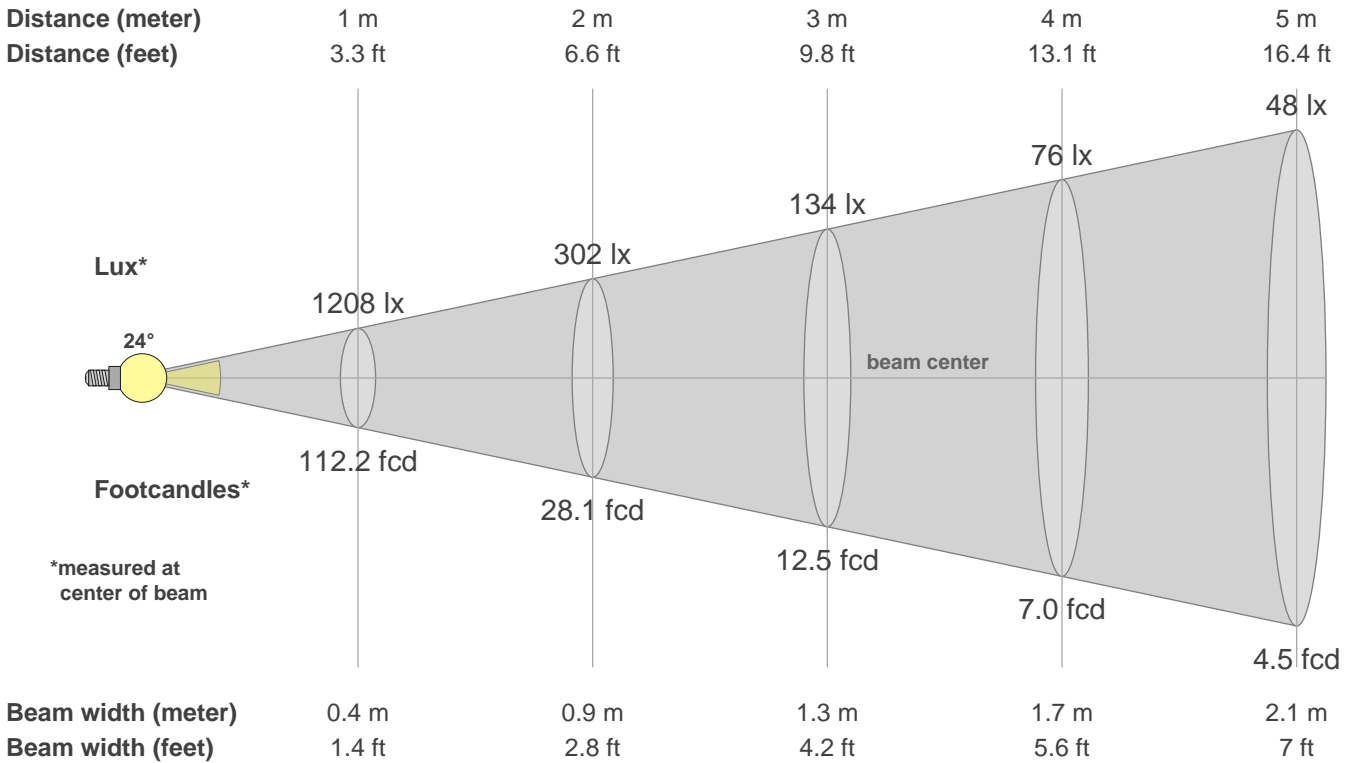
Q1	Q2	Q3	Q4	Q5	Q6	Q7	Q8	Q9	Q10	Q11	Q12	Q13	Q14	Q15
83.71	98.32	90.32	97.01	91.20	85.30	89.35	93.60	96.03	95.06	98.00	92.74	90.06	80.54	81.58

CQS: 89.1



Color parameters

CCT	CRI	CRI R9	TM30 Rf	TM30 Rg	CQS	x	y	u	v	Duv
3374 K	91.3	38.5	87.8	103.0	89.1	0.4	0.4	0.2	0.3	-0.0021



Intensities in 0° c-plane

0°	2°	4°	6°	8°	10°	12°	14°	16°	18°	20°	22°	24°	26°	28°	30°	32°	34°	36°	38°
1208	1185	1115	1007	877	740	611	493	392	307	238	182	139	105	81	62	48	37	29	23
100%	98%	92%	83%	73%	61%	51%	41%	32%	25%	20%	15%	11%	9%	7%	5%	4%	3%	2%	2%

Intensities in 90° c-plane

0°	2°	4°	6°	8°	10°	12°	14°	16°	18°	20°	22°	24°	26°	28°	30°	32°	34°	36°	38°
1208	1189	1115	1005	877	745	617	500	398	312	242	187	143	109	83	63	48	37	29	23
100%	98%	92%	83%	73%	62%	51%	41%	33%	26%	20%	15%	12%	9%	7%	5%	4%	3%	2%	2%

Intensities in 180° c-plane

0°	2°	4°	6°	8°	10°	12°	14°	16°	18°	20°	22°	24°	26°	28°	30°	32°	34°	36°	38°
1208	1180	1106	998	868	737	610	495	394	309	239	183	139	106	81	62	48	37	29	23
100%	98%	92%	83%	72%	61%	51%	41%	33%	26%	20%	15%	12%	9%	7%	5%	4%	3%	2%	2%

Intensities in 270° c-plane

0°	2°	4°	6°	8°	10°	12°	14°	16°	18°	20°	22°	24°	26°	28°	30°	32°	34°	36°	38°
1208	1176	1099	992	868	739	616	501	400	314	243	186	140	105	79	60	46	35	27	22
100%	97%	91%	82%	72%	61%	51%	41%	33%	26%	20%	15%	12%	9%	7%	5%	4%	3%	2%	2%

Beam angle 50%	Field angle 10%	Cutoff angle 2.5%	Intensity ratio in 120° cone	Intensity ratio in 90° cone
24.1°	50.2°	71.0°	99.0%	96.5%