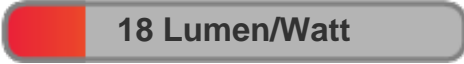




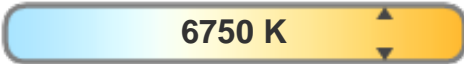
Light efficiency:



Light quality:



Color temperature:



Output: 330 lm  
Peak: 1278 cd  
Power: 18.4 W  
PF: 0.63

4 PLANES



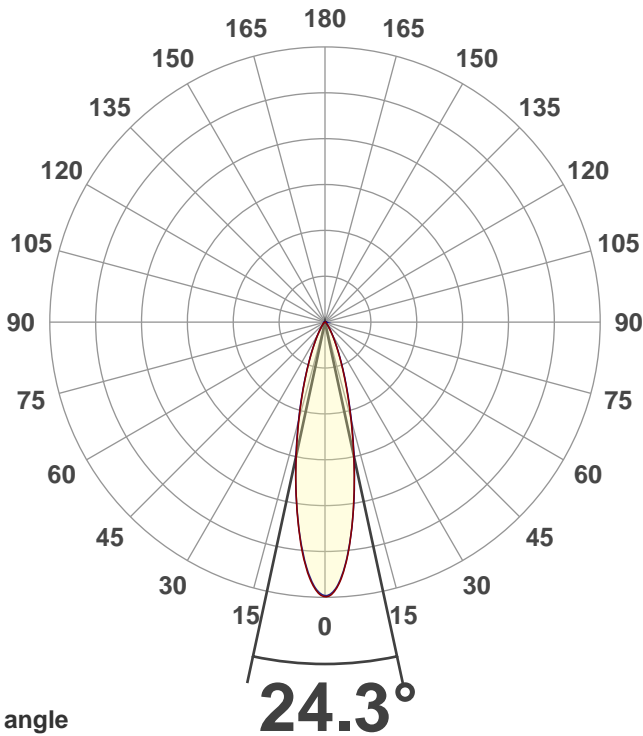
Product name:  
**MEDI-O RGBA Zoom 24 degrees  
6800K**

Date and time:  
**5/13/2021 1:02:17 PM**

Item number:  
**NA**

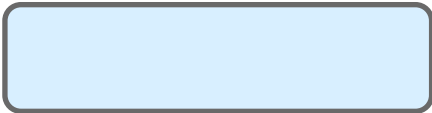
Minimum order quantity:  
**NA**

Additional information:  
**Ludicrous Mode with zoom 24  
degrees (DMX128), 6800K  
(DMX255CCT)**



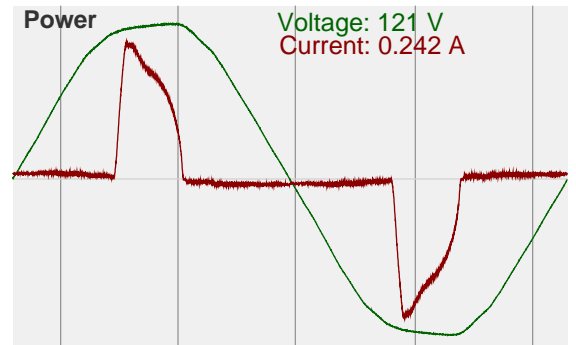
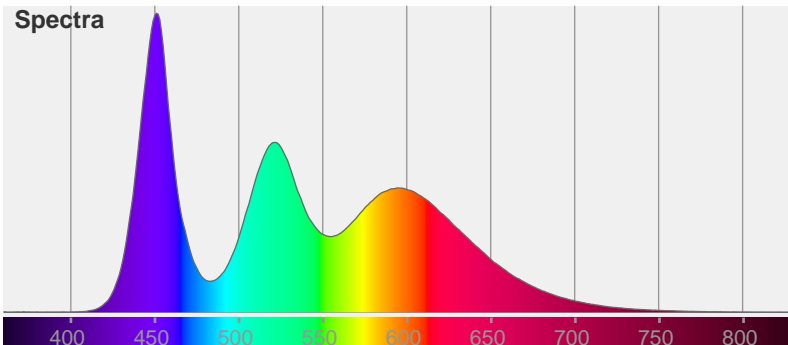
Beam angle

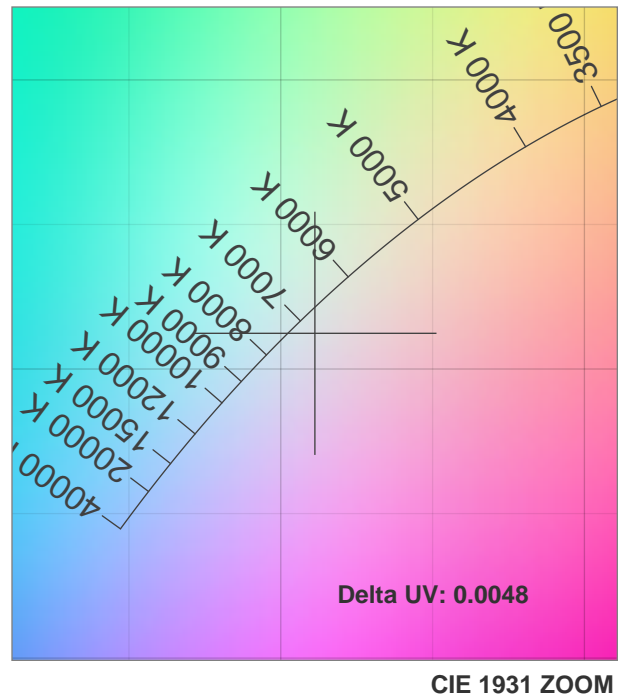
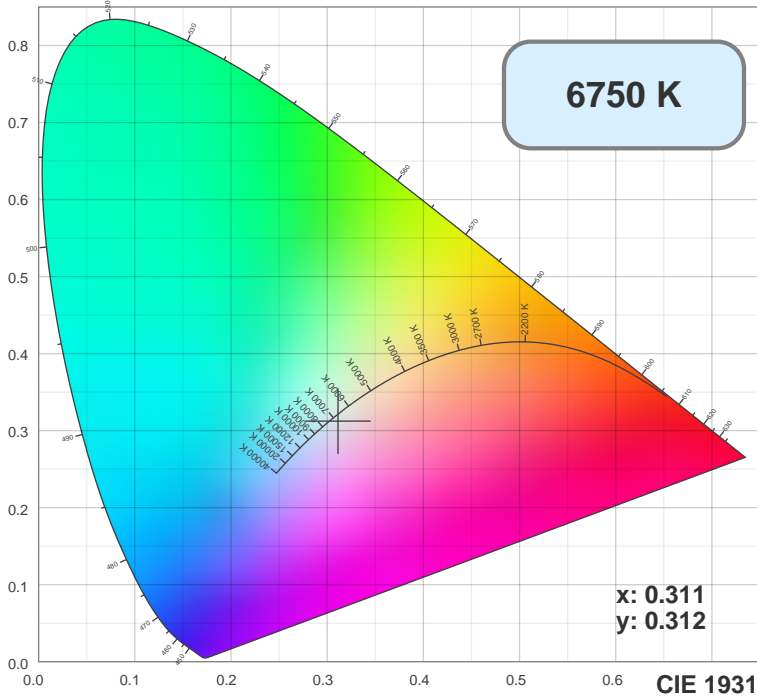
Color



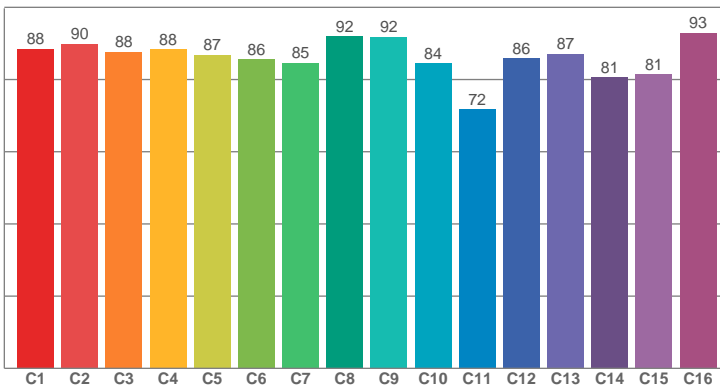
CIE1931  
x: 0.311  
y: 0.312

Spectra

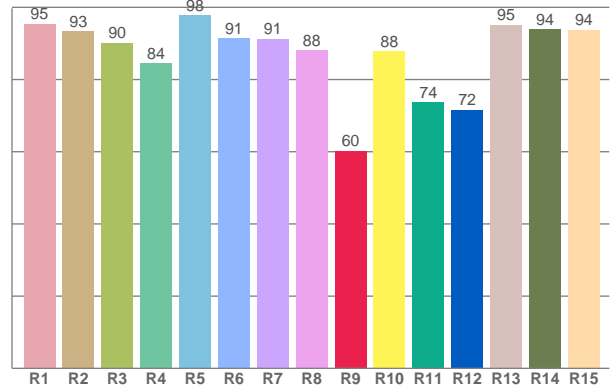




TM30: 86.4



CRI: 91.5 (R1-R8)



CRI R values, only R1-R8 are used to calculate final CRI value

R1	R2	R3	R4	R5	R6	R7	R8	R9	R10	R11	R12	R13	R14	R15
95.37	93.28	90.19	84.41	97.83	91.47	91.25	88.12	60.25	87.87	73.71	71.57	95.17	93.98	93.79

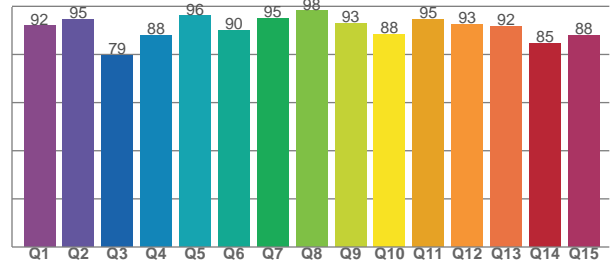
TM30 C values, 16 binned values out of total of 99 C values

C1	C2	C3	C4	C5	C6	C7	C8	C9	C10	C11	C12	C13	C14	C15	C16
88.46	89.87	87.67	88.36	86.82	85.57	84.63	91.95	91.80	84.40	71.78	85.79	87.16	80.62	81.47	92.91

CQS Q values

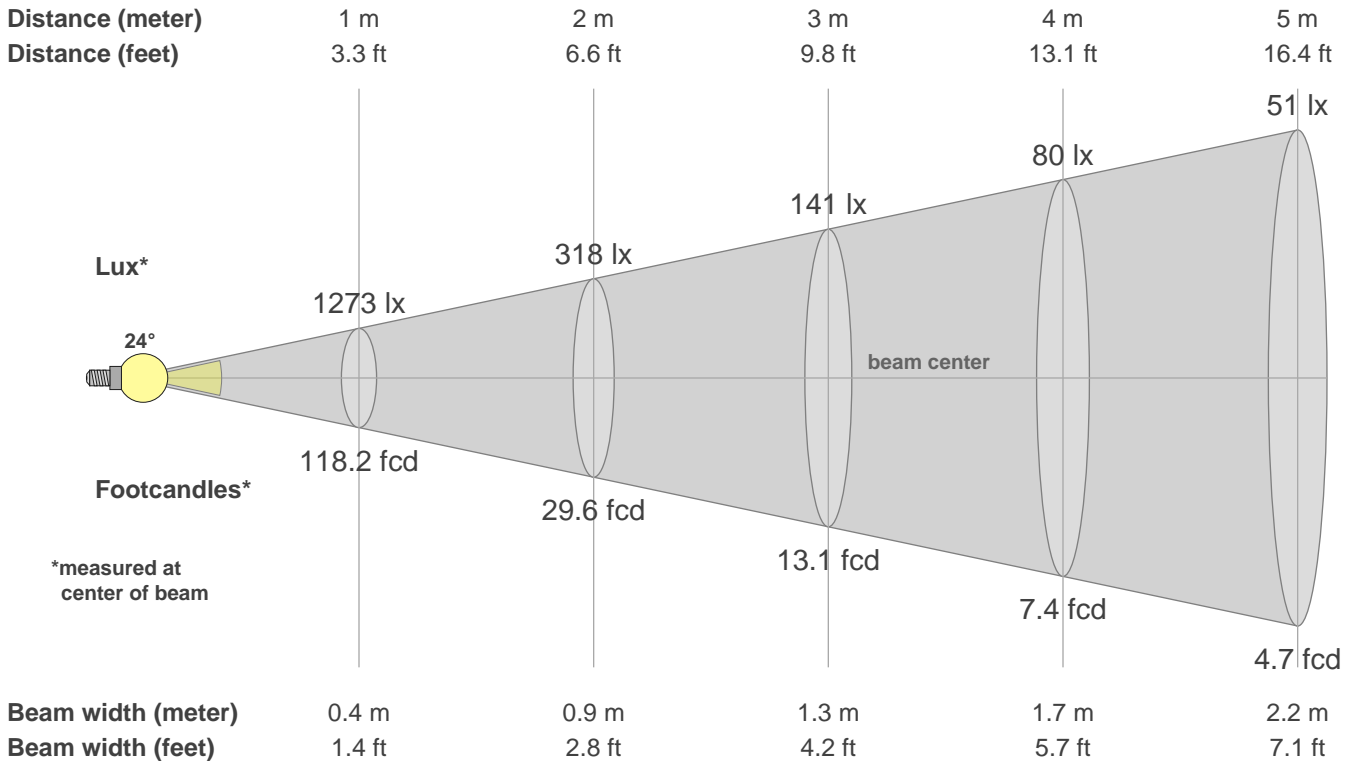
Q1	Q2	Q3	Q4	Q5	Q6	Q7	Q8	Q9	Q10	Q11	Q12	Q13	Q14	Q15
91.85	94.58	79.50	87.96	96.07	89.98	95.05	98.15	92.89	88.29	94.52	92.58	91.77	84.57	88.06

CQS: 89.9



Color parameters

CCT	CRI	CRI R9	TM30 Rf	TM30 Rg	CQS	x	y	u	v	Duv
6750 K	91.5	60.2	86.4	105.6	89.9	0.3	0.3	0.2	0.3	-0.0080



**Intensities in 0° c-plane**

0°	2°	4°	6°	8°	10°	12°	14°	16°	18°	20°	22°	24°	26°	28°	30°	32°	34°	36°	38°
1273	1250	1177	1064	927	785	649	526	419	329	255	196	150	115	88	68	53	41	32	25
100%	98%	92%	84%	73%	62%	51%	41%	33%	26%	20%	15%	12%	9%	7%	5%	4%	3%	3%	2%

**Intensities in 90° c-plane**

0°	2°	4°	6°	8°	10°	12°	14°	16°	18°	20°	22°	24°	26°	28°	30°	32°	34°	36°	38°
1273	1246	1170	1059	927	789	655	531	424	335	262	203	156	119	91	69	53	41	32	25
100%	98%	92%	83%	73%	62%	51%	42%	33%	26%	21%	16%	12%	9%	7%	5%	4%	3%	3%	2%

**Intensities in 180° c-plane**

0°	2°	4°	6°	8°	10°	12°	14°	16°	18°	20°	22°	24°	26°	28°	30°	32°	34°	36°	38°
1273	1243	1166	1054	919	782	649	528	422	332	258	198	151	115	88	68	53	41	32	25
100%	98%	92%	83%	72%	61%	51%	41%	33%	26%	20%	16%	12%	9%	7%	5%	4%	3%	3%	2%

**Intensities in 270° c-plane**

0°	2°	4°	6°	8°	10°	12°	14°	16°	18°	20°	22°	24°	26°	28°	30°	32°	34°	36°	38°
1273	1243	1160	1046	916	783	655	534	427	334	260	200	152	115	87	66	50	38	30	24
100%	98%	91%	82%	72%	62%	51%	42%	34%	26%	20%	16%	12%	9%	7%	5%	4%	3%	2%	2%

Beam angle 50%	Field angle 10%	Cutoff angle 2.5%	Intensity ratio in 120° cone	Intensity ratio in 90° cone
24.3°	50.6°	71.8°	98.9%	96.2%