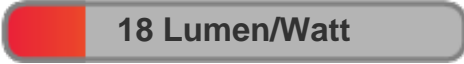




Light efficiency:



Light quality:



Color temperature:



Output: 228 lm

Peak: 920 cd

Power: 12.8 W

PF: 0.63

4 PLANES



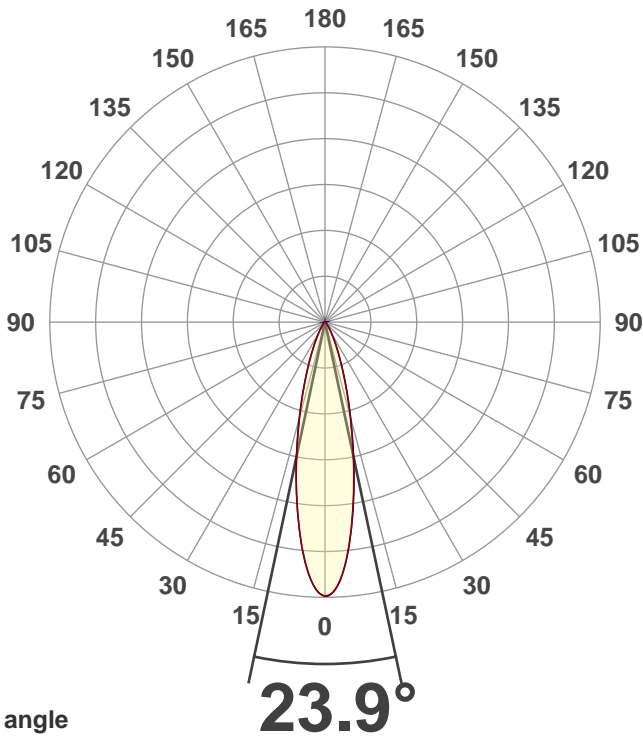
Product name:  
**MEDI-O RGBA Zoom 24 degrees full Amber**

Date and time:  
**5/13/2021 12:53:50 PM**

Item number:  
**NA**

Minimum order quantity:  
**NA**

Additional information:  
**Ludicrous Mode with zoom 24 degrees (DMX128), full Amber**

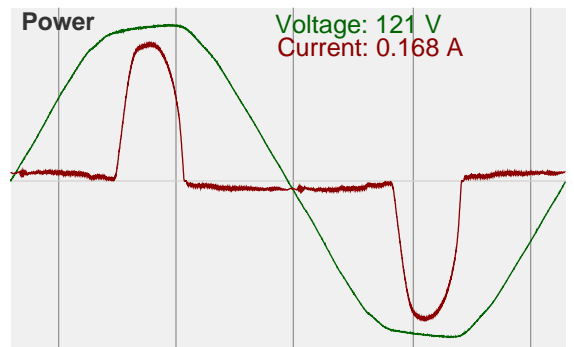
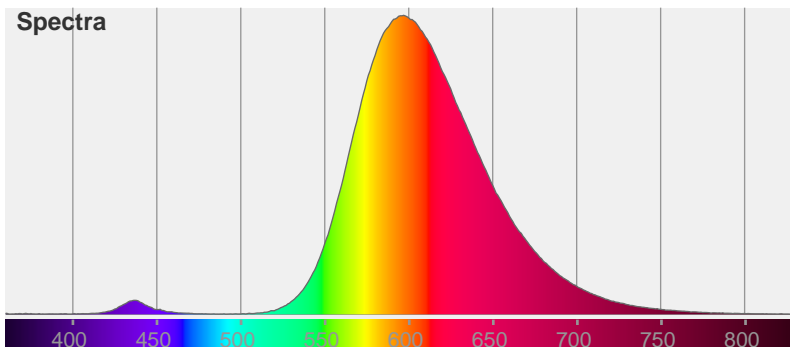


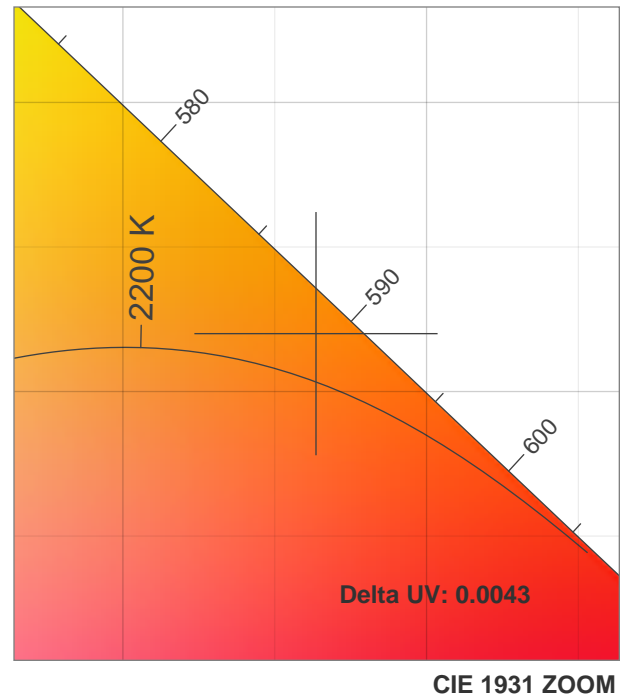
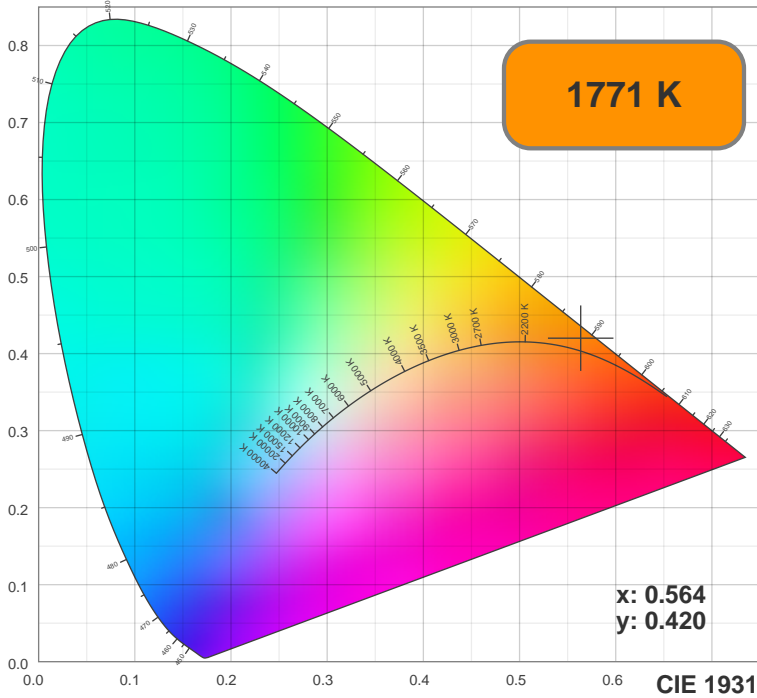
Color



CIE1931  
x: 0.564  
y: 0.420

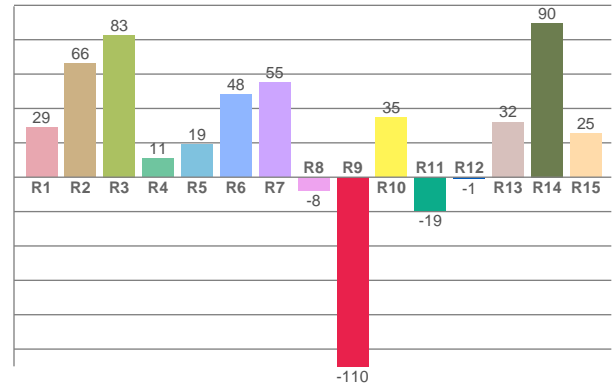
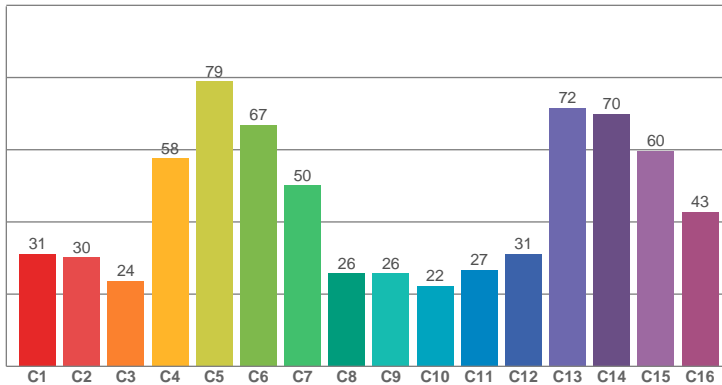
Spectra





TM30: 43.2

CRI: 37.9 (R1-R8)



CRI R values, only R1-R8 are used to calculate final CRI value

R1	R2	R3	R4	R5	R6	R7	R8	R9	R10	R11	R12	R13	R14	R15
28.97	66.17	82.67	10.93	19.06	47.96	55.00	-7.90	-110.03	34.65	-19.25	-0.67	32.23	89.64	25.32

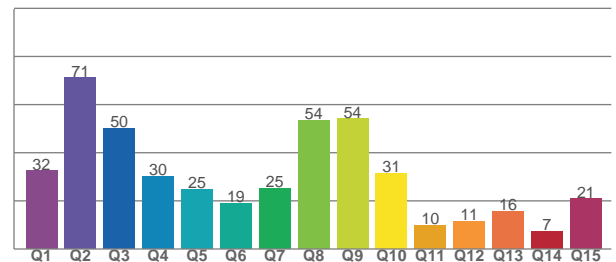
TM30 C values, 16 binned values out of total of 99 C values

C1	C2	C3	C4	C5	C6	C7	C8	C9	C10	C11	C12	C13	C14	C15	C16
31.14	30.14	23.68	57.55	78.90	66.92	50.18	25.77	25.78	22.26	26.74	31.20	71.57	69.96	59.72	42.82

CQS Q values

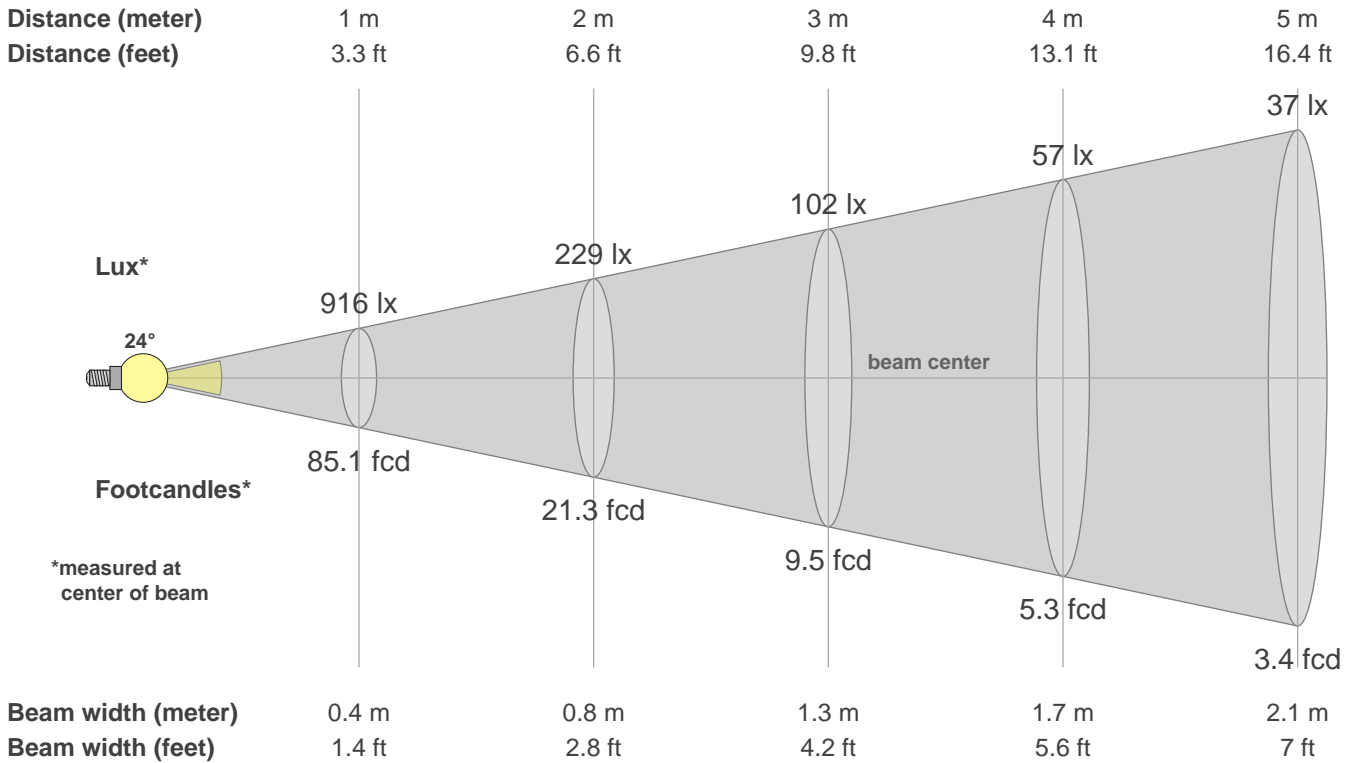
Q1	Q2	Q3	Q4	Q5	Q6	Q7	Q8	Q9	Q10	Q11	Q12	Q13	Q14	Q15
32.47	71.06	50.01	30.12	24.70	18.90	25.23	53.53	54.09	31.33	9.70	11.47	15.52	7.25	20.79

CQS: 26.3



Color parameters

CCT	CRI	CRI R9	TM30 Rf	TM30 Rg	CQS	x	y	u	v	Duv
1771 K	37.9	-110.0	43.2	65.6	26.3	0.6	0.4	0.3	0.4	0.0043



**Intensities in 0° c-plane**

0°	2°	4°	6°	8°	10°	12°	14°	16°	18°	20°	22°	24°	26°	28°	30°	32°	34°	36°	38°
916	902	846	759	659	557	458	367	291	227	176	135	103	78	59	45	35	27	21	16
100%	98%	92%	83%	72%	61%	50%	40%	32%	25%	19%	15%	11%	8%	6%	5%	4%	3%	2%	2%

**Intensities in 90° c-plane**

0°	2°	4°	6°	8°	10°	12°	14°	16°	18°	20°	22°	24°	26°	28°	30°	32°	34°	36°	38°
916	898	845	763	664	562	464	375	298	233	179	137	105	80	60	45	35	27	20	16
100%	98%	92%	83%	73%	61%	51%	41%	33%	25%	20%	15%	11%	9%	7%	5%	4%	3%	2%	2%

**Intensities in 180° c-plane**

0°	2°	4°	6°	8°	10°	12°	14°	16°	18°	20°	22°	24°	26°	28°	30°	32°	34°	36°	38°
916	892	835	753	655	555	458	371	295	230	177	135	103	78	60	45	34	26	21	16
100%	97%	91%	82%	72%	61%	50%	40%	32%	25%	19%	15%	11%	9%	7%	5%	4%	3%	2%	2%

**Intensities in 270° c-plane**

0°	2°	4°	6°	8°	10°	12°	14°	16°	18°	20°	22°	24°	26°	28°	30°	32°	34°	36°	38°
916	895	837	751	655	558	464	375	298	232	179	136	102	76	57	43	32	25	19	15
100%	98%	91%	82%	72%	61%	51%	41%	32%	25%	20%	15%	11%	8%	6%	5%	4%	3%	2%	2%

Beam angle 50%	Field angle 10%	Cutoff angle 2.5%	Intensity ratio in 120° cone	Intensity ratio in 90° cone
23.9°	49.7°	70.0°	99.1%	96.8%