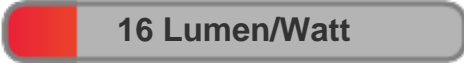




Light efficiency:



Light quality:



Color temperature:



Output: 211 lm

Peak: 229 cd

Power: 13.2 W

PF: 0.60

4 PLANES



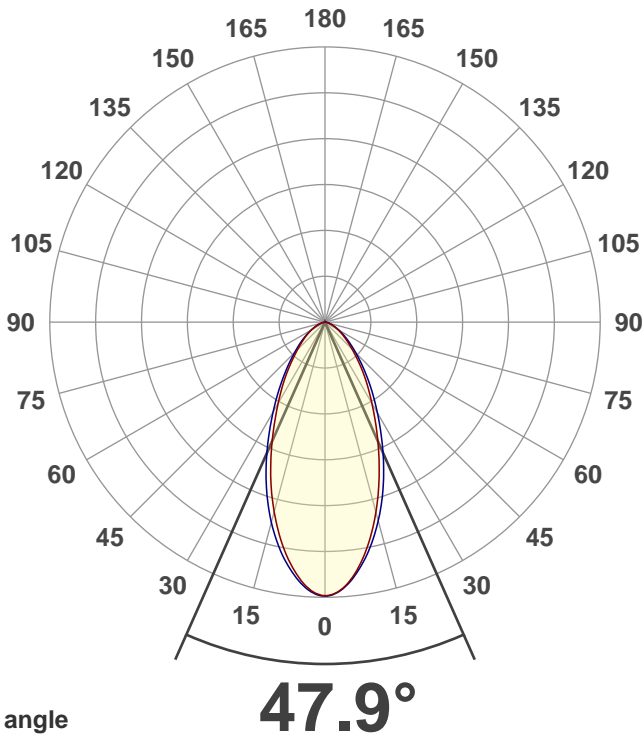
Product name:
MEDI-O RGBA Zoom 47 degrees full Amber

Date and time:
5/13/2021 1:18:54 PM

Item number:
NA

Minimum order quantity:
NA

Additional information:
Ludicrous Mode with zoom 47 (DMX255) degrees full Amber



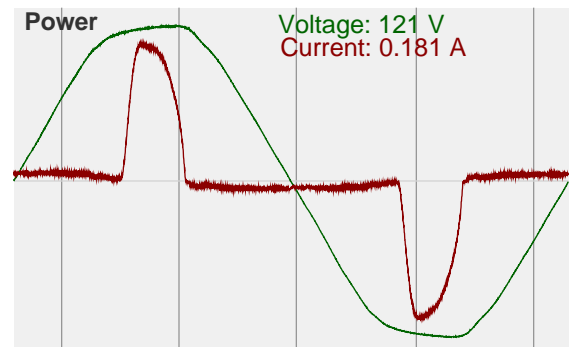
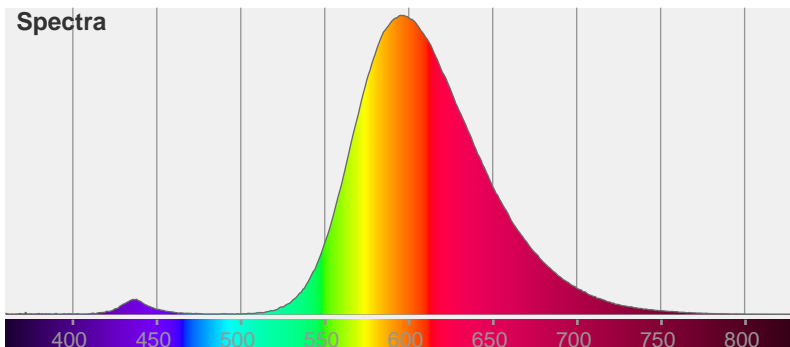
Beam angle

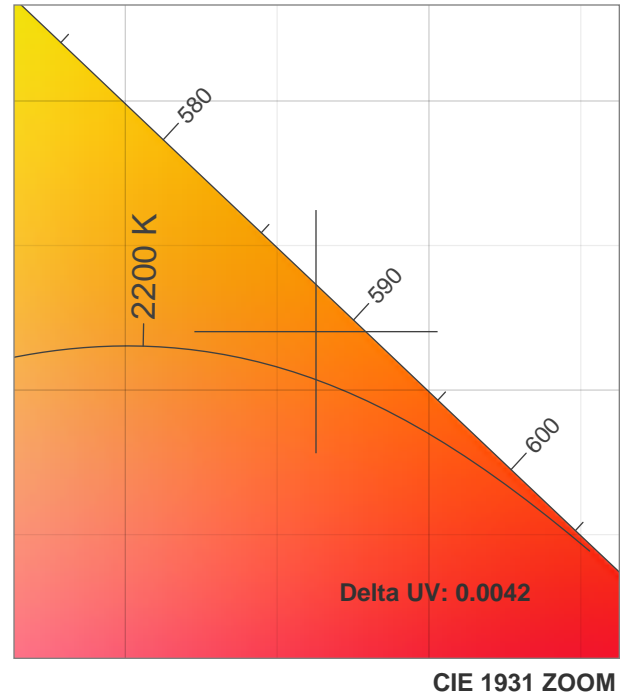
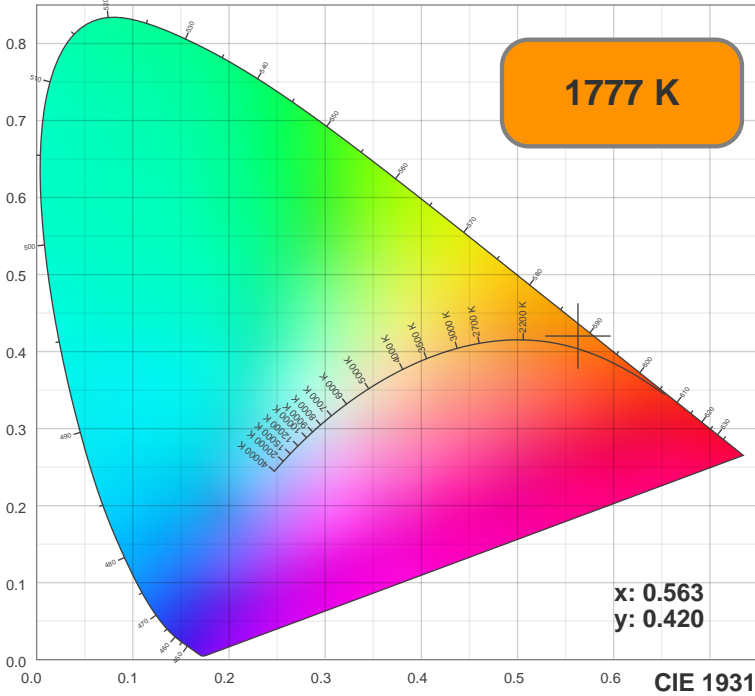
Color



CIE1931
x: 0.563
y: 0.420

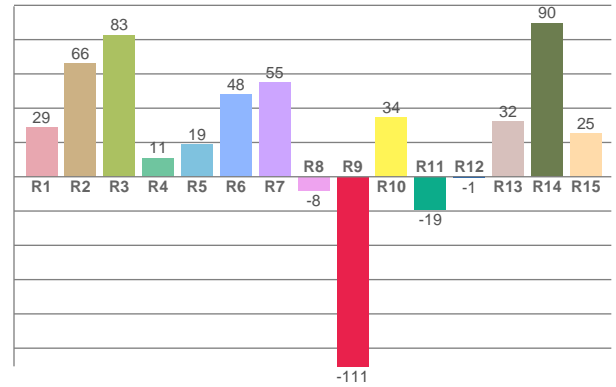
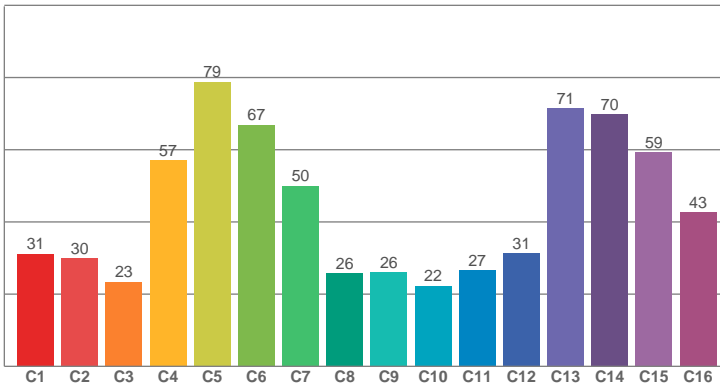
Spectra





TM30: 43.0

CRI: 37.8 (R1-R8)



CRI R values, only R1-R8 are used to calculate final CRI value

R1	R2	R3	R4	R5	R6	R7	R8	R9	R10	R11	R12	R13	R14	R15
28.90	66.13	82.74	10.95	19.04	47.88	54.95	-8.07	-110.59	34.49	-19.21	-0.76	32.19	89.68	25.19

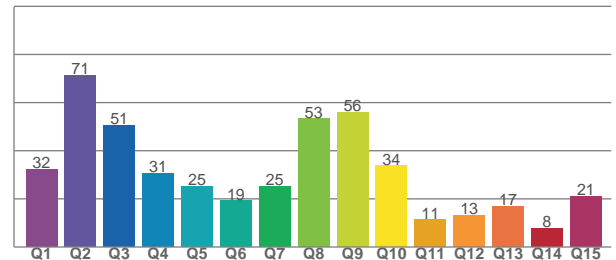
TM30 C values, 16 binned values out of total of 99 C values

C1	C2	C3	C4	C5	C6	C7	C8	C9	C10	C11	C12	C13	C14	C15	C16
31.15	29.91	23.41	57.00	78.83	66.93	49.94	25.74	25.97	22.28	26.63	31.36	71.41	69.82	59.32	42.69

CQS Q values

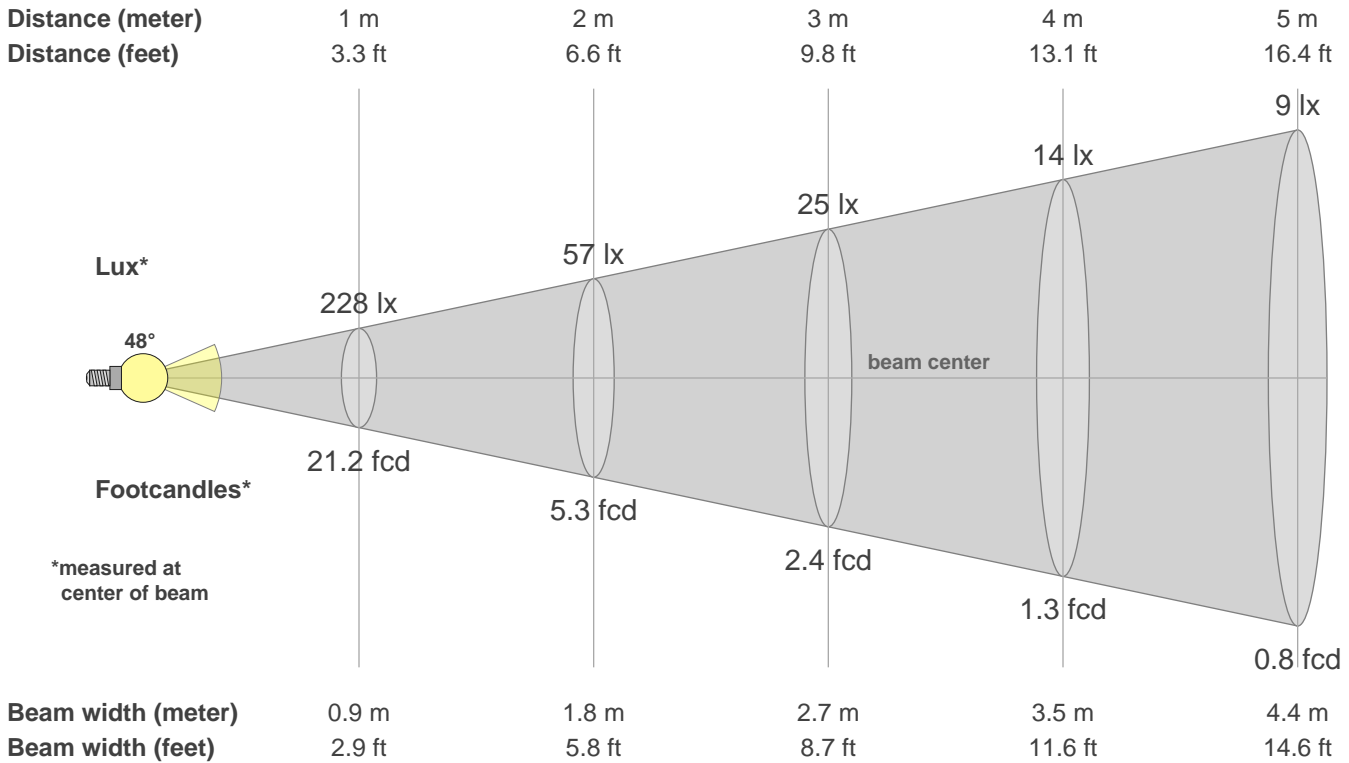
Q1	Q2	Q3	Q4	Q5	Q6	Q7	Q8	Q9	Q10	Q11	Q12	Q13	Q14	Q15
32.23	71.24	50.67	30.59	25.16	19.20	25.21	53.24	56.03	33.68	11.29	13.00	16.87	7.82	21.00

CQS: 27.2



Color parameters

CCT	CRI	CRI R9	TM30 Rf	TM30 Rg	CQS	x	y	u	v	Duv
1777 K	37.8	-110.6	43.0	66.1	27.2	0.6	0.4	0.3	0.4	0.0042



Intensities in 0° c-plane

0°	5°	10°	15°	20°	25°	30°	35°	40°	45°	50°	55°	60°	65°	70°	75°	80°	85°	90°	95°
228	219	195	164	132	103	78	60	44	32	24	17	12	8	5	3	1	0	0	0
100%	96%	85%	72%	58%	45%	34%	26%	19%	14%	10%	8%	5%	4%	2%	1%	0%	0%	0%	0%

Intensities in 90° c-plane

0°	5°	10°	15°	20°	25°	30°	35°	40°	45°	50°	55°	60°	65°	70°	75°	80°	85°	90°	95°
228	219	198	172	143	114	88	67	50	37	27	19	13	9	6	3	1	0	0	0
100%	96%	87%	75%	62%	50%	38%	29%	22%	16%	12%	8%	6%	4%	2%	1%	0%	0%	0%	0%

Intensities in 180° c-plane

0°	5°	10°	15°	20°	25°	30°	35°	40°	45°	50°	55°	60°	65°	70°	75°	80°	85°	90°	95°
228	218	194	164	133	103	78	59	44	33	24	18	13	9	6	3	1	0	0	0
100%	95%	85%	72%	58%	45%	34%	26%	19%	14%	11%	8%	6%	4%	2%	1%	0%	0%	0%	0%

Intensities in 270° c-plane

0°	5°	10°	15°	20°	25°	30°	35°	40°	45°	50°	55°	60°	65°	70°	75°	80°	85°	90°	95°
228	220	199	173	143	113	87	65	49	36	27	19	13	9	5	3	1	0	0	0
100%	96%	87%	76%	63%	50%	38%	29%	21%	16%	12%	8%	6%	4%	2%	1%	0%	0%	0%	0%

Beam angle 50%	Field angle 10%	Cutoff angle 2.5%	Intensity ratio in 120° cone	Intensity ratio in 90° cone
47.9°	103.2°	138.9°	94.3%	80.8%