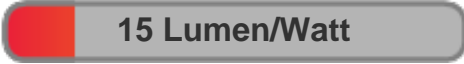




Light efficiency:



Light quality:



Color temperature:



Output: 283 lm

Peak: 299 cd

Power: 18.4 W

PF: 0.64

4 PLANES



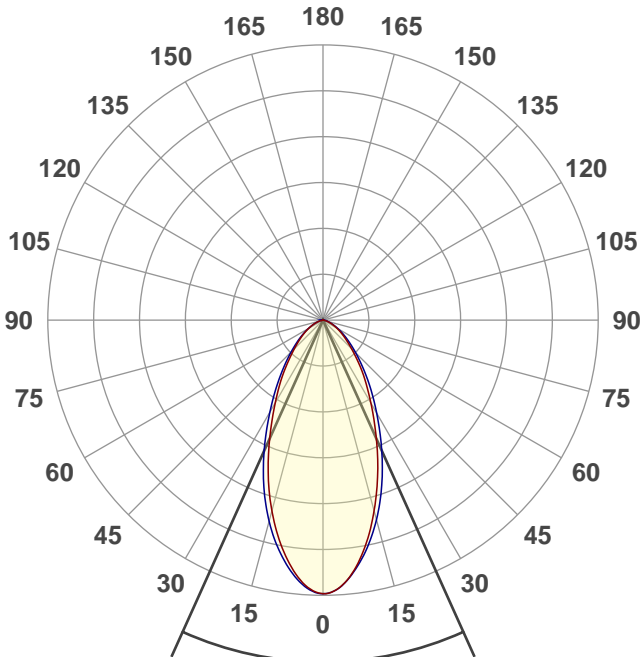
Product name:
**MEDI-O RGBA Zoom 48 degrees
3500K**

Date and time:
5/13/2021 1:26:34 PM

Item number:
NA

Minimum order quantity:
NA

Additional information:
**Ludicrous Mode with zoom 48
degrees (DMX255) 3500K
(DMX070CCT)**



Beam angle

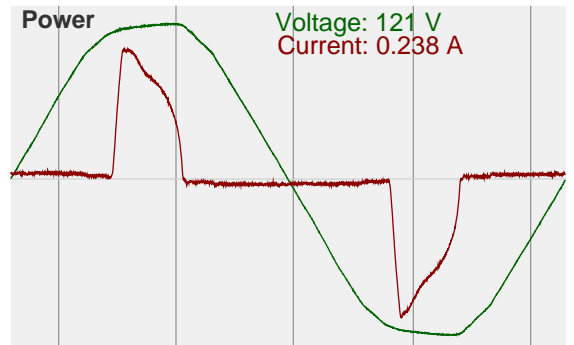
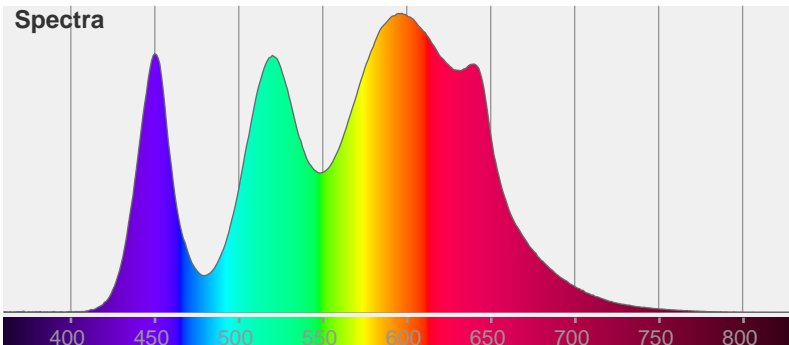
48.5°

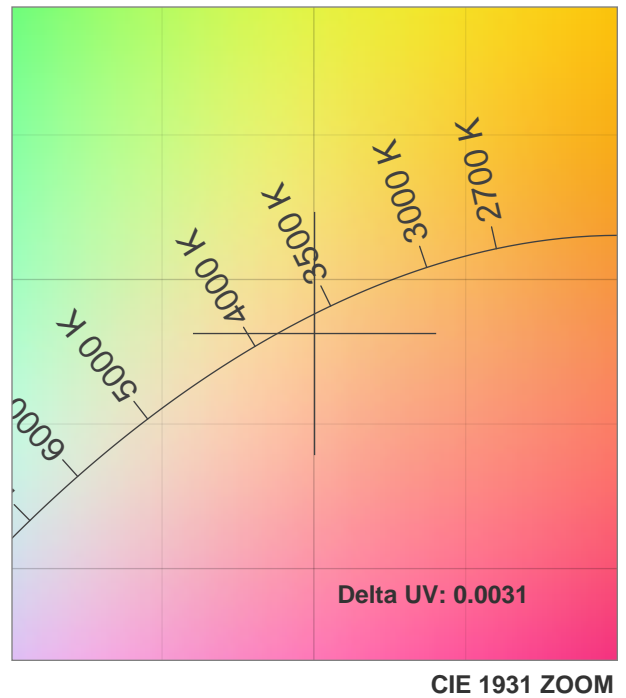
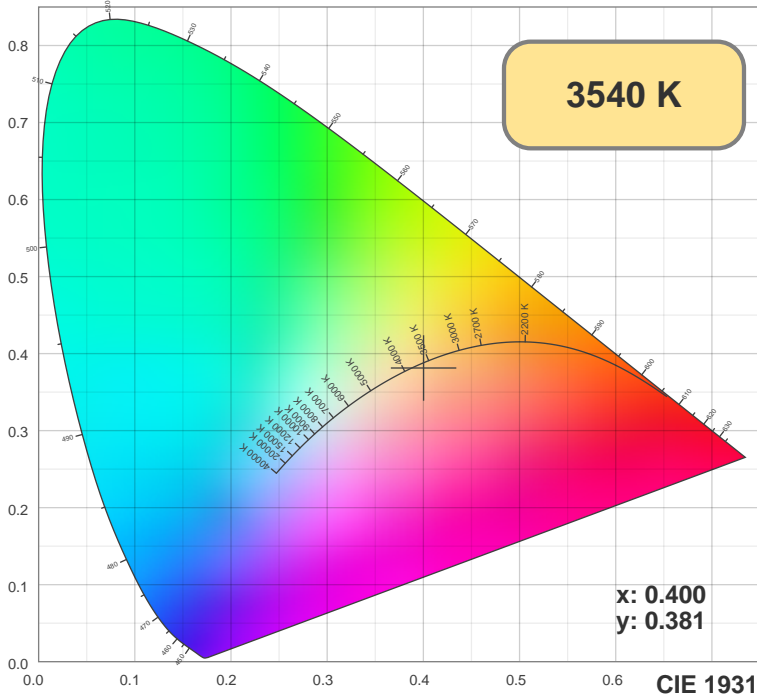
Color



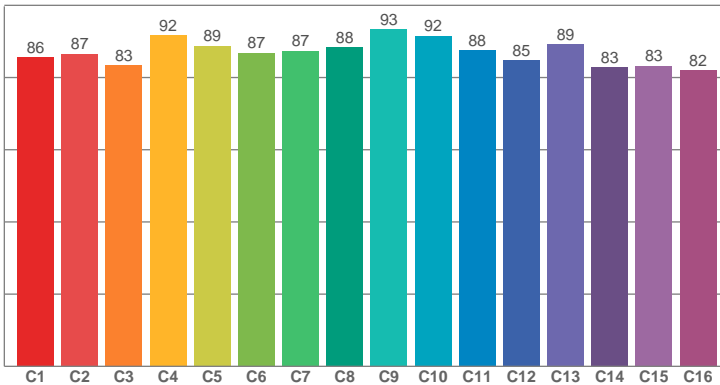
CIE1931
x: 0.400
y: 0.381

Spectra

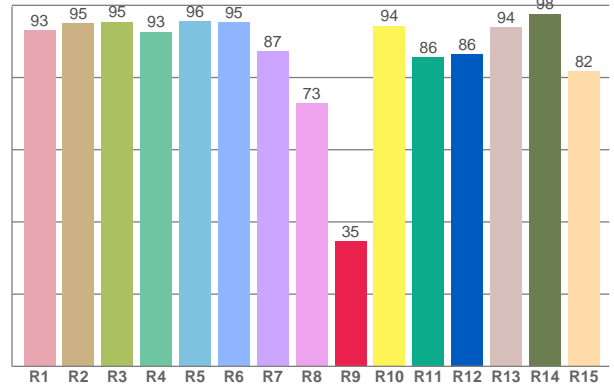




TM30: 87.4



CRI: 90.9 (R1-R8)



CRI R values, only R1-R8 are used to calculate final CRI value

R1	R2	R3	R4	R5	R6	R7	R8	R9	R10	R11	R12	R13	R14	R15
93.10	94.96	95.45	92.65	95.59	95.25	87.18	72.84	34.69	94.31	85.56	86.40	93.96	97.68	81.66

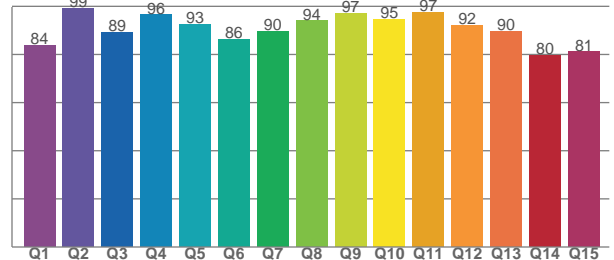
TM30 C values, 16 binned values out of total of 99 C values

C1	C2	C3	C4	C5	C6	C7	C8	C9	C10	C11	C12	C13	C14	C15	C16
85.60	86.55	83.40	91.67	88.76	86.89	87.36	88.41	93.39	91.51	87.58	84.74	89.23	82.83	83.26	82.01

CQS Q values

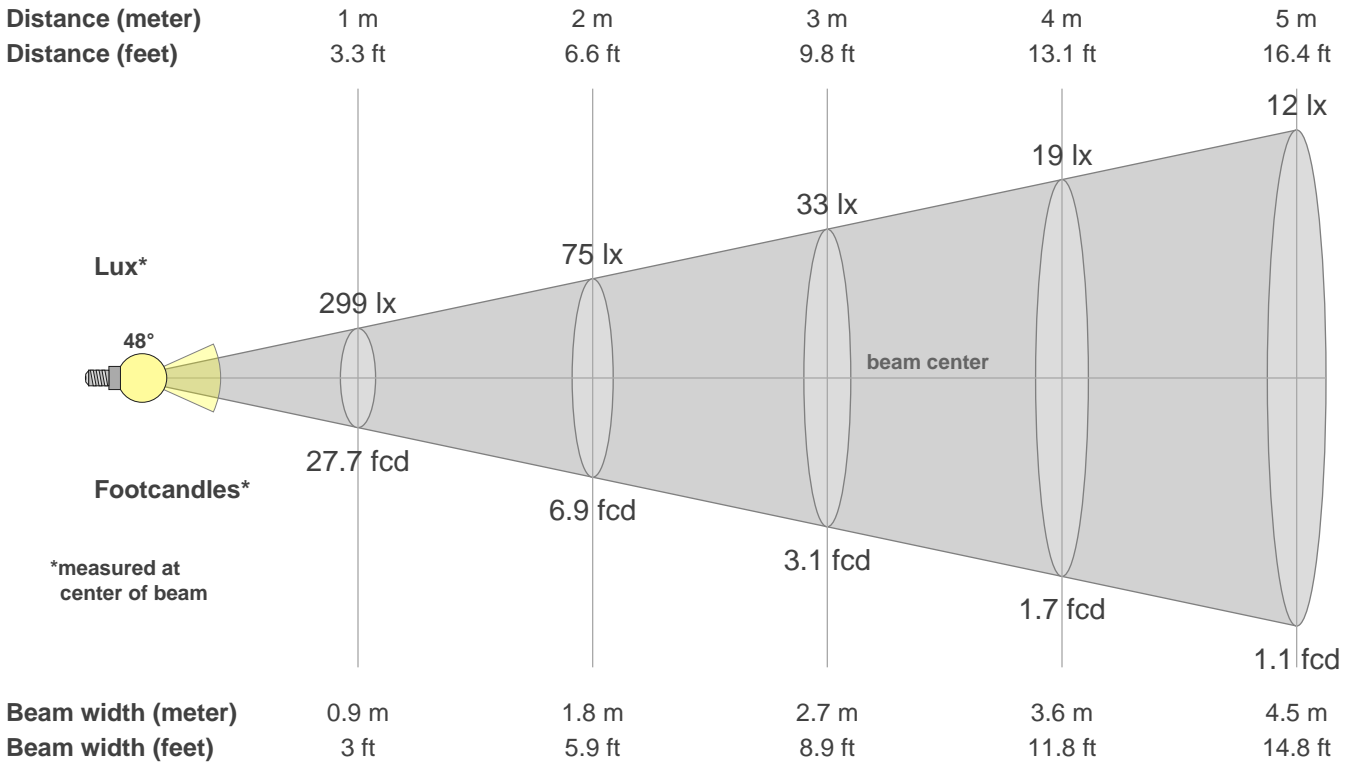
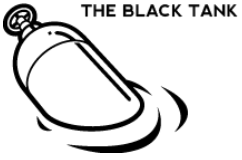
Q1	Q2	Q3	Q4	Q5	Q6	Q7	Q8	Q9	Q10	Q11	Q12	Q13	Q14	Q15
83.91	99.01	89.11	96.49	92.59	86.36	89.70	93.97	97.15	94.67	97.46	92.11	89.57	79.64	81.11

CQS: 89.2



Color parameters

CCT	CRI	CRI R9	TM30 Rf	TM30 Rg	CQS	x	y	u	v	Duv
3540 K	90.9	34.7	87.4	102.5	89.2	0.4	0.4	0.2	0.3	-0.0031



Intensities in 0° c-plane

0°	5°	10°	15°	20°	25°	30°	35°	40°	45°	50°	55°	60°	65°	70°	75°	80°	85°	90°	95°
299	287	256	216	175	137	105	80	60	44	33	24	17	12	8	4	1	0	0	0
100%	96%	86%	72%	59%	46%	35%	27%	20%	15%	11%	8%	6%	4%	3%	1%	1%	0%	0%	0%

Intensities in 90° c-plane

0°	5°	10°	15°	20°	25°	30°	35°	40°	45°	50°	55°	60°	65°	70°	75°	80°	85°	90°	95°
299	287	260	226	188	151	118	90	68	51	37	27	19	13	8	4	2	0	0	0
100%	96%	87%	76%	63%	51%	39%	30%	23%	17%	13%	9%	6%	4%	3%	1%	1%	0%	0%	0%

Intensities in 180° c-plane

0°	5°	10°	15°	20°	25°	30°	35°	40°	45°	50°	55°	60°	65°	70°	75°	80°	85°	90°	95°
299	285	254	216	175	137	105	80	59	44	34	25	18	13	8	4	1	0	0	0
100%	95%	85%	72%	59%	46%	35%	27%	20%	15%	11%	8%	6%	4%	3%	1%	0%	0%	0%	0%

Intensities in 270° c-plane

0°	5°	10°	15°	20°	25°	30°	35°	40°	45°	50°	55°	60°	65°	70°	75°	80°	85°	90°	95°
299	288	261	228	190	151	116	88	66	49	37	27	18	12	7	4	1	0	0	0
100%	96%	87%	76%	64%	51%	39%	30%	22%	17%	12%	9%	6%	4%	2%	1%	0%	0%	0%	0%

Beam angle 50%	Field angle 10%	Cutoff angle 2.5%	Intensity ratio in 120° cone	Intensity ratio in 90° cone
48.5°	105.1°	140.4°	94.0%	80.0%