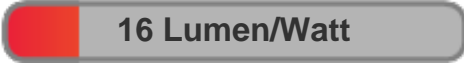


Light efficiency:



Light quality:



Color temperature:



Output: 304 lm

Peak: 316 cd

Power: 18.7 W

PF: 0.63

4 PLANES



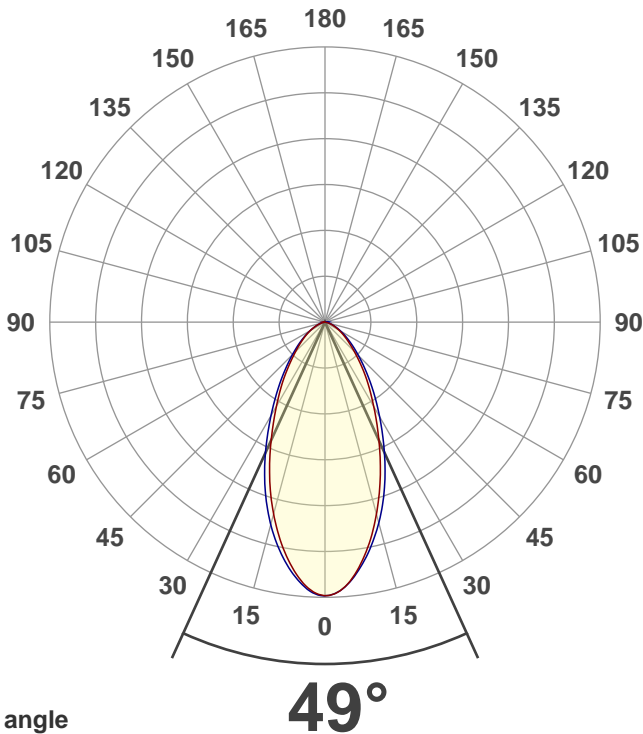
Product name:
**MEDI-O RGBA Zoom 48 degrees
7000K**

Date and time:
5/13/2021 1:29:04 PM

Item number:
NA

Minimum order quantity:
NA

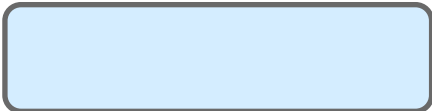
Additional information:
**Ludicrous Mode with zoom 48
degrees (DMX255) 7000K
(DMX255CCT)**



Beam angle

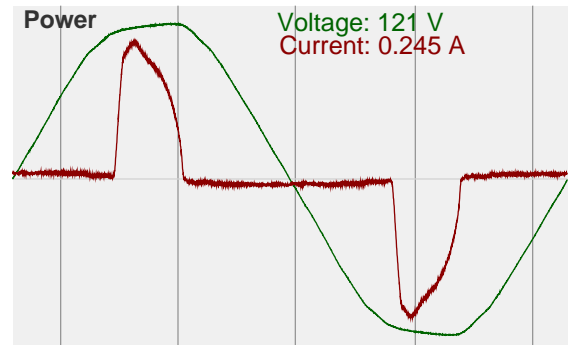
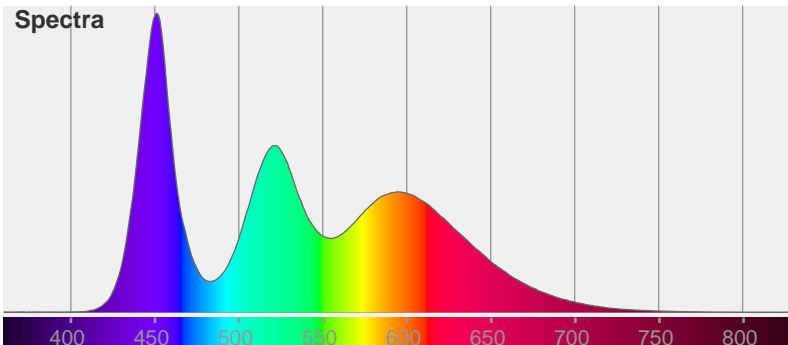
49°

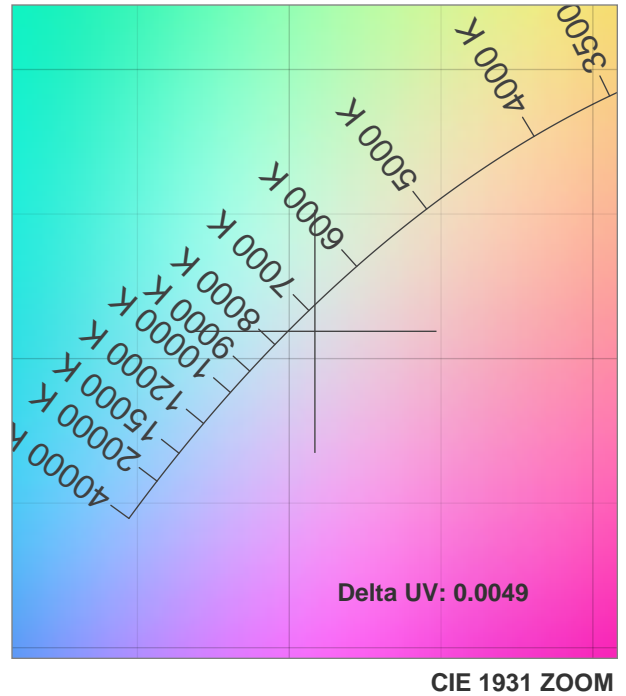
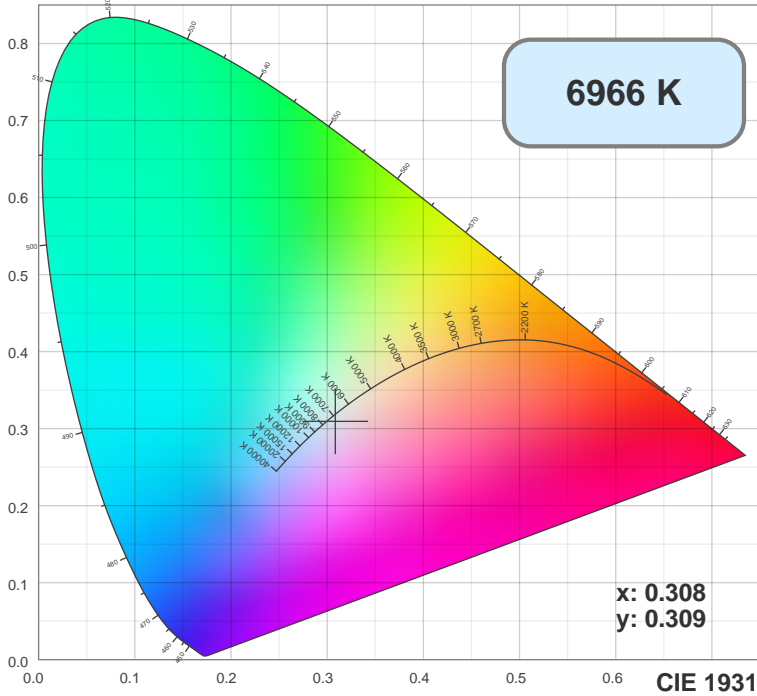
Color



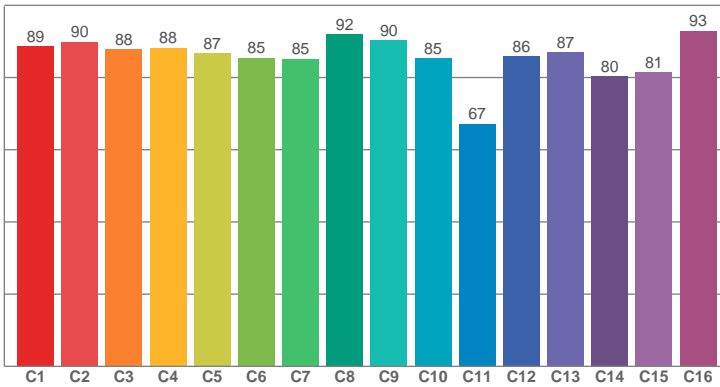
CIE1931
x: 0.308
y: 0.309

Spectra

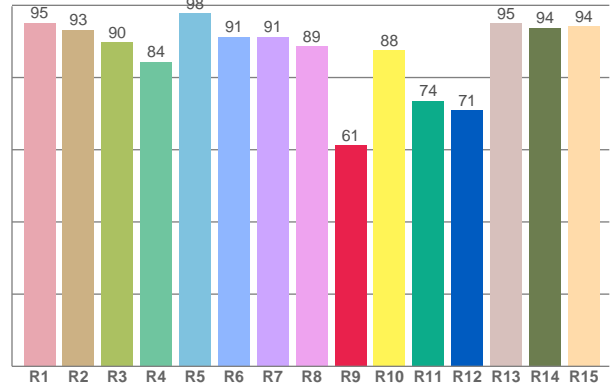




TM30: 86.3



CRI: 91.4 (R1-R8)



CRI R values, only R1-R8 are used to calculate final CRI value

R1	R2	R3	R4	R5	R6	R7	R8	R9	R10	R11	R12	R13	R14	R15
95.17	93.17	89.78	84.30	97.80	91.24	91.32	88.55	61.20	87.53	73.54	70.92	95.06	93.75	94.14

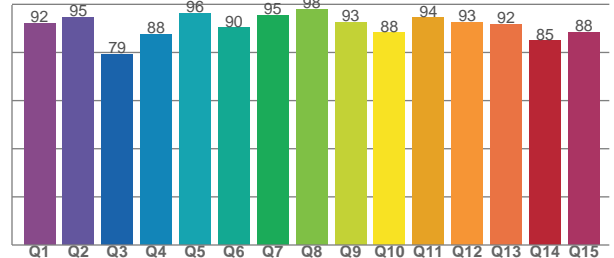
TM30 C values, 16 binned values out of total of 99 C values

C1	C2	C3	C4	C5	C6	C7	C8	C9	C10	C11	C12	C13	C14	C15	C16
88.56	89.85	87.75	88.25	86.71	85.41	85.22	92.00	90.36	85.23	67.19	85.91	87.03	80.25	81.40	92.95

CQS Q values

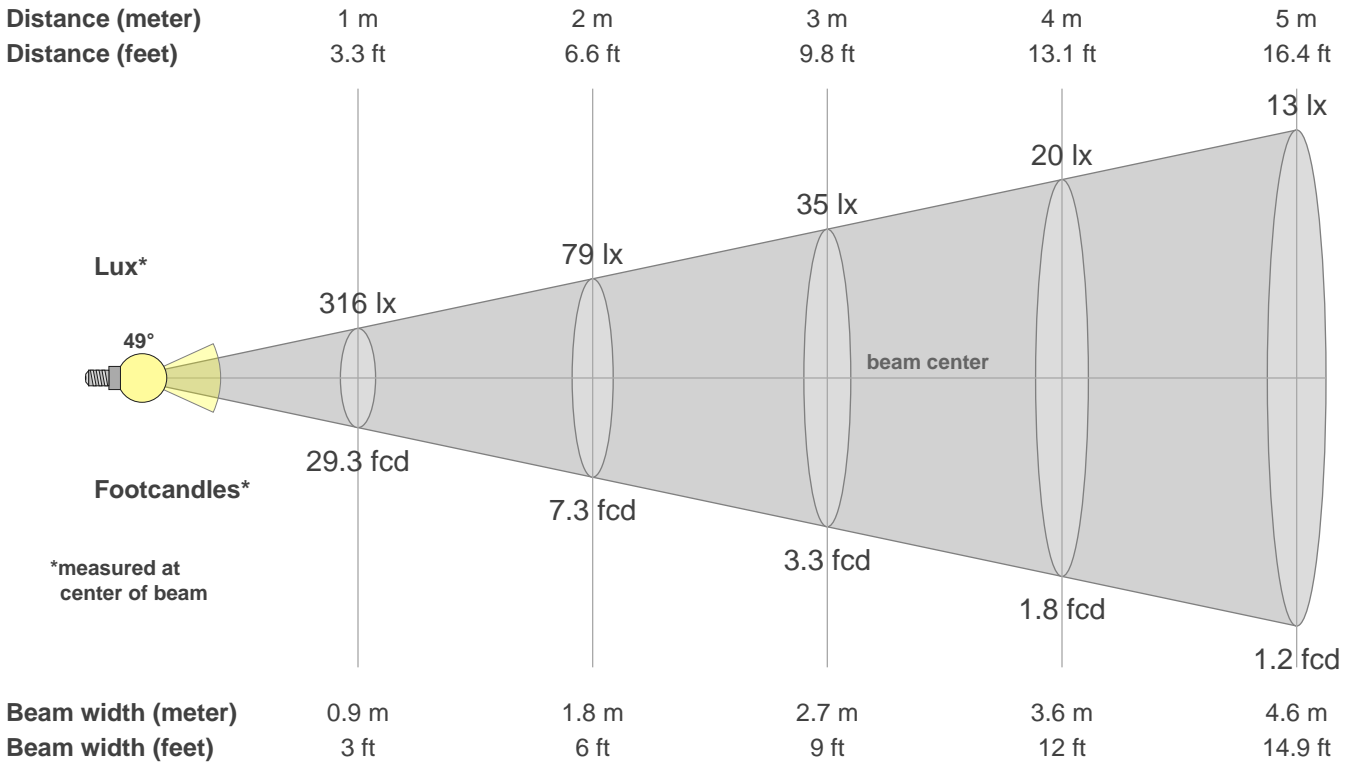
Q1	Q2	Q3	Q4	Q5	Q6	Q7	Q8	Q9	Q10	Q11	Q12	Q13	Q14	Q15
92.11	94.55	79.33	87.50	96.21	90.27	95.28	97.97	92.61	88.11	94.35	92.52	91.78	84.78	88.31

CQS: 89.9



Color parameters

CCT	CRI	CRI R9	TM30 Rf	TM30 Rg	CQS	x	y	u	v	Duv
6966 K	91.4	61.2	86.3	105.3	89.9	0.3	0.3	0.2	0.3	-0.0081



Intensities in 0° c-plane

0°	5°	10°	15°	20°	25°	30°	35°	40°	45°	50°	55°	60°	65°	70°	75°	80°	85°	90°	95°
316	304	271	230	187	147	113	87	65	48	35	26	19	13	8	4	2	0	0	0
100%	96%	86%	73%	59%	46%	36%	27%	21%	15%	11%	8%	6%	4%	3%	1%	1%	0%	0%	0%

Intensities in 90° c-plane

0°	5°	10°	15°	20°	25°	30°	35°	40°	45°	50°	55°	60°	65°	70°	75°	80°	85°	90°	95°
316	304	275	240	201	162	126	97	73	55	41	30	21	14	9	5	2	0	0	0
100%	96%	87%	76%	64%	51%	40%	31%	23%	17%	13%	9%	7%	5%	3%	2%	1%	0%	0%	0%

Intensities in 180° c-plane

0°	5°	10°	15°	20°	25°	30°	35°	40°	45°	50°	55°	60°	65°	70°	75°	80°	85°	90°	95°
316	301	269	230	187	146	112	86	64	48	36	27	20	13	8	4	1	0	0	0
100%	95%	85%	73%	59%	46%	36%	27%	20%	15%	11%	9%	6%	4%	3%	1%	0%	0%	0%	0%

Intensities in 270° c-plane

0°	5°	10°	15°	20°	25°	30°	35°	40°	45°	50°	55°	60°	65°	70°	75°	80°	85°	90°	95°
316	304	277	242	203	162	125	95	71	53	40	29	20	13	8	4	1	0	0	0
100%	96%	88%	77%	64%	51%	40%	30%	23%	17%	13%	9%	6%	4%	3%	1%	0%	0%	0%	0%

Beam angle 50%	Field angle 10%	Cutoff angle 2.5%	Intensity ratio in 120° cone	Intensity ratio in 90° cone
49.0°	105.8°	141.0°	93.9%	79.8%